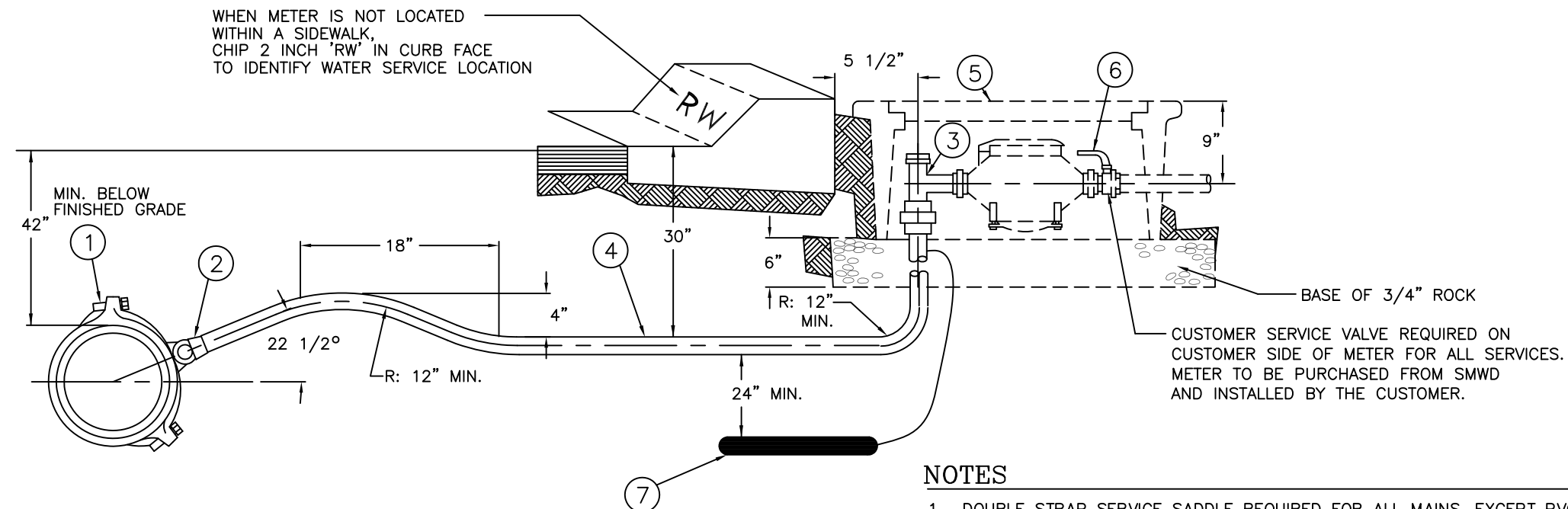


<u>Drawing No.</u>	<u>Description</u>
W22A	Backflow Preventer (Double Check)
W23	Not Used
W24	Steel Pipe Joint Details
W25	Bonded Pipe Joint Details
W26	Criteria for the Separation of Water Mains from Sanitary Sewers and Nondomestic Water Mains
W27	Meter Manifold Installation
W28	Retaining Wall Detail
S1	Standard Manhole
S1A	Flat Top Manhole
S2	Sewer Saddle and Cut in Wye Connection
S3	Cleanout
S4	House Lateral
S5	VCP. Sewer Pipe Bedding
S6	PVC. Sewer Pipe Details
S7	Steel Casing Pipe
S8	Concrete Encasement Type B & C
S9	Pipe Slope Anchors
RW1	1 Inch Recycled Water Service
RW2	1½ Inch Recycled Water Service
RW2A	2 Inch Recycled Water Service
RW3	Recycled Valve, Valve Box & Cover
RW4	Pipe Identification for Recycled Steel Water Mains
RW5	Tap of Recycled ACP, PVC or DIP Mains
RW6	1" and 2" Recycled Combination Air Release and Vacuum Valve Assembly
RW6A	Recycled Water Main Taps for Air Release and Vacuum Valve Assembly
RW7	Temporary 2" Recycled Blow Off
RW8	4" Recycled Blow Off – PVC Main Connection



NOTES

1. DOUBLE STRAP SERVICE SADDLE REQUIRED FOR ALL MAINS, EXCEPT PVC UNDER 12" DIAMETER.
2. INSTALL CORPORATION STOP TAP WITH KEY SIDEWAYS, IN OPEN POSITION.
3. THE CORPORATION STOP TAP WILL BE SPECIFIED BY THE PIPE MANUFACTURER, ALL DRY TAPS WILL BE MADE USING MACHINE WITH GUIDE OR PILOT TAP.
4. THE WATER SERVICE SHALL EXTEND PERPENDICULAR TO THE CENTERLINE OF THE STREET FROM THE WATER MAIN TO THE METER STOP EXCEPT IN CUL-DE-SAC ENDS, WHERE NON-PERPENDICULAR INSTALLATION IS ALLOWED.
5. NO TAP TO MAIN SHALL BE WITHIN 12" OF A COUPLING OR WITHIN 18" OF ANOTHER TAP.
6. METER BOXES SHALL BE INSTALLED DIRECTLY BEHIND SIDEWALK WHETHER SIDEWALK IS ADJACENT TO CURB OR NOT. ANGLE METER STOP SHALL BE POSITIONED TO ALLOW FULL OPERATION OF BOTH VALVES.
7. NO SPLICES WILL BE PERMITTED BETWEEN CORPORATION STOP AND ANGLE METER STOP EXCEPT WHEN SERVICE RUN EXCEEDS 60 FEET, IN WHICH CASE A SILVER SOLDER COUPLING SHALL BE USED.
8. METER BOXES SHALL BE PURPLE IN COLOR AND PURCHASED AND INSTALLED BY CUSTOMER.
9. FOR METERS IN SLOPES, SEE DRAWING W28.
10. WRAP SERVICE LINE FROM MAINLINE TO ANGLE STOP WITH PURPLE IDENTIFICATION TAPE.
11. ANODE LEAD WIRE SHALL BE CLAMPED TO COPPER TUBING. CLAMP SHALL BE DIRECT BURIAL TYPE OF RED BRASS WITH BRASS SCREWS.
12. COPPPER TUBING SHALL BE DOUBLE POLYETHYLENE ENCASED WITH 4 MIL. MINIMUM THICKNESS, AND ALL OPENINGS IN THE SLEEVES SHALL BE TAPED SHUT WITH POLYKEN # 900 TAPE WRAP, OR APPROVED EQUAL. TAPE SHALL BE APPLIED IN STRICT CONFORMANCE WITH MANUFACTURER'S RECOMMENDATIONS.
13. INSTALL SACRIFICIAL ANODE CONSISTING OF 15 LB. HIGH PURITY ZINC BAR BAGGED IN A BACKFILL OF CALCIUM, BENTONITE AND GYPSUM, WITH NO.12 SOLID COPPER LEAD WIRE. BURY ANODE IN SERVICE LINE TRENCH. SATURATE ANODE WITH WATER PRIOR TO BACKFILLING TRENCH.

CONSTRUCTION ITEMS / MATERIALS LIST

ITEM	SIZE AND DESCRIPTION	MANUFACTURER	MFR. CAT. NO. OR SPEC.
①	SERVICE SADDLE WITH IP THR'D FOR: ASBESTOS-CEMENT PIPE (ACP) POLYVINYL-CHLORIDE PIPE (PVC) DUCTILE-IRON PIPE (DIP)	ACP FORD MUELLER AY McDONALD PVC FORD MUELLER AY McDONALD DIP ROMAC	202BS BR2S 3846 202BS BR2S 3846 STYLE 306 STAINLESS STEEL
②	1" BRONZE CORPORATION STOP	FORD MUELLER JAMES JONES	FB-700 B-15025 J-1929
③	1" x 3/4" BRONZE ANGLE METER STOP WITH LOCKWING	FORD MUELLER JAMES JONES	KV23-342W H-14255 J-1525
④	1" COPPER TUBING WITH POLYETHYLENE SLEEVE	SEE NOTE 12	TYPE "K" SOFT
⑤	PURPLE METER BOX (WITH READING LID) SEE NOTE 8	EISEL	437
⑥	CUSTOMER BALL VALVE	JONES	J1908
⑦	15 LB ZINC ANODE		

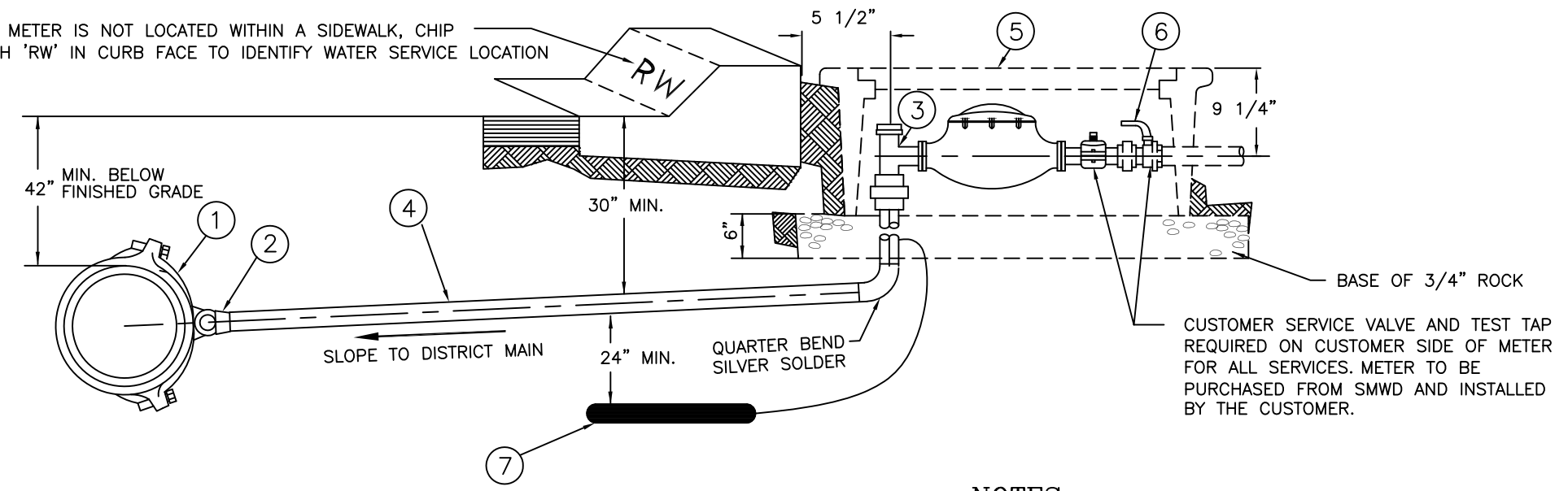
REVISION	DRAWN	APP'D	DATE
△	R.D.	D.F.	OCT. 01
△	R.D.	D.F.	AUG. 07
APPROVED			
<i>David N. Jerome</i>		39535	9/25/96
CHIEF ENGINEER		RCE	DATE

Santa Margarita Water District

1 INCH RECYCLED
WATER SERVICE

STANDARD
DRAWING
NUMBER
RW1

WHEN METER IS NOT LOCATED WITHIN A SIDEWALK, CHIP 2 INCH 'RW' IN CURB FACE TO IDENTIFY WATER SERVICE LOCATION



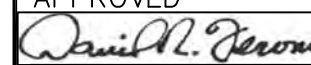
CUSTOMER SERVICE VALVE AND TEST TAP REQUIRED ON CUSTOMER SIDE OF METER FOR ALL SERVICES. METER TO BE PURCHASED FROM SMWD AND INSTALLED BY THE CUSTOMER.

NOTES

1. DOUBLE STRAP SERVICE SADDLE REQUIRED FOR ALL MAINS.
2. INSTALL CORPORATION STOP TAP WITH KEY SIDEWAYS, IN OPEN POSITION.
3. THE CORPORATION STOP TAP WILL BE SPECIFIED BY THE PIPE MANUFACTURER, ALL DRY TAPS WILL BE MADE USING MACHINE WITH GUIDE OR PILOT TAP.
4. THE WATER SERVICE SHALL EXTEND PERPENDICULAR TO THE CENTERLINE OF THE STREET FROM THE WATER MAIN TO THE METER STOP EXCEPT IN CUL-DE-SAC ENDS, WHERE NON-PERPENDICULAR INSTALLATION IS ALLOWED.
5. NO TAP TO MAIN SHALL BE WITHIN 12" OF A COUPLING OR WITHIN 24" OF ANOTHER TAP.
6. METER BOXES SHALL BE INSTALLED DIRECTLY BEHIND SIDEWALK WHETHER SIDEWALK IS ADJACENT TO CURB OR NOT. ANGLE METER STOP SHALL BE POSITIONED TO ALLOW FULL OPERATION OF BOTH VALVES.
7. SILVER SOLDER COUPLING SHALL BE USED FOR SPLICES.
8. METER BOXES SHALL BE PURPLE IN COLOR AND PURCHASED AND INSTALLED BY CUSTOMER.
9. FOR METERS IN SLOPES, SEE DRAWING W28.
10. WRAP SERVICE LINE FROM MAINLINE TO ANGLE STOP WITH PURPLE IDENTIFICATION TAPE.
11. ANODE LEAD WIRE SHALL BE CLAMPED TO COPPER TUBING. CLAMP SHALL BE DIRECT BURIAL TYPE OF RED BRASS WITH BRASS SCREWS.
12. COPPPER TUBING SHALL BE DOUBLE POLYETHYLENE ENCASED WITH 4 MIL. MINIMUM THICKNESS, AND ALL OPENINGS IN THE SLEEVES SHALL BE TAPED SHUT WITH POLYKEN # 900 TAPE WRAP, OR APPROVED EQUAL. TAPE SHALL BE APPLIED IN STRICT CONFORMANCE WITH MANUFACTURER'S RECOMMENDATIONS.
13. INSTALL SACRIFICIAL ANODE CONSISTING OF 15 LB. HIGH PURITY ZINC BAR BAGGED IN A BACKFILL OF CALCIUM, BENTONITE AND GYPSUM, WITH NO.12 SOLID COPPER LEAD WIRE. BURY ANODE IN SERVICE LINE TRENCH. SATURATE ANODE WITH WATER PRIOR TO BACKFILLING TRENCH.

CONSTRUCTION ITEMS / MATERIALS LIST

ITEM	SIZE AND DESCRIPTION	MANUFACTURER	MFR. CAT. NO. OR SPEC.
①	SERVICE SADDLE WITH IP THR'D FOR: ASBESTOS-CEMENT PIPE (ACP) POLYVINYL-CHLORIDE PIPE (PVC) DUCTILE-IRON PIPE (DIP)	ACP FORD MUELLER AY McDONALD PVC FORD MUELLER AY McDONALD DIP ROMAC	202BS BR2S 3846 202BS BR2S 3846 STYLE 306 STAINLESS STEEL
②	1 1/2" BRONZE CORPORATION STOP	FORD MUELLER JAMES JONES	FB-700 B-15025 J-1929
③	1 1/2" BRONZE ANGLE METER STOP WITH LOCKWING	FORD MUELLER JAMES JONES	FV23-666W H-14286 J-1525-F
④	1 1/2" COPPER TUBING WITH POLYETHYLENE SLEEVE	SEE NOTE 12	TYPE "K" SOFT
⑤	PURPLE METER BOX (WITH READING LID) SEE NOTE 8	EISEL	666B
⑥	CUSTOMER BALL VALVE BRASS NUTS AND BOLTS TEST TAP	AY MC DONALD JONES	6101MW 1-1/2" J1912 5/8" X 2-1/2" BRASS TEE W/ PLUG
⑦	15 LB ZINC ANODE		

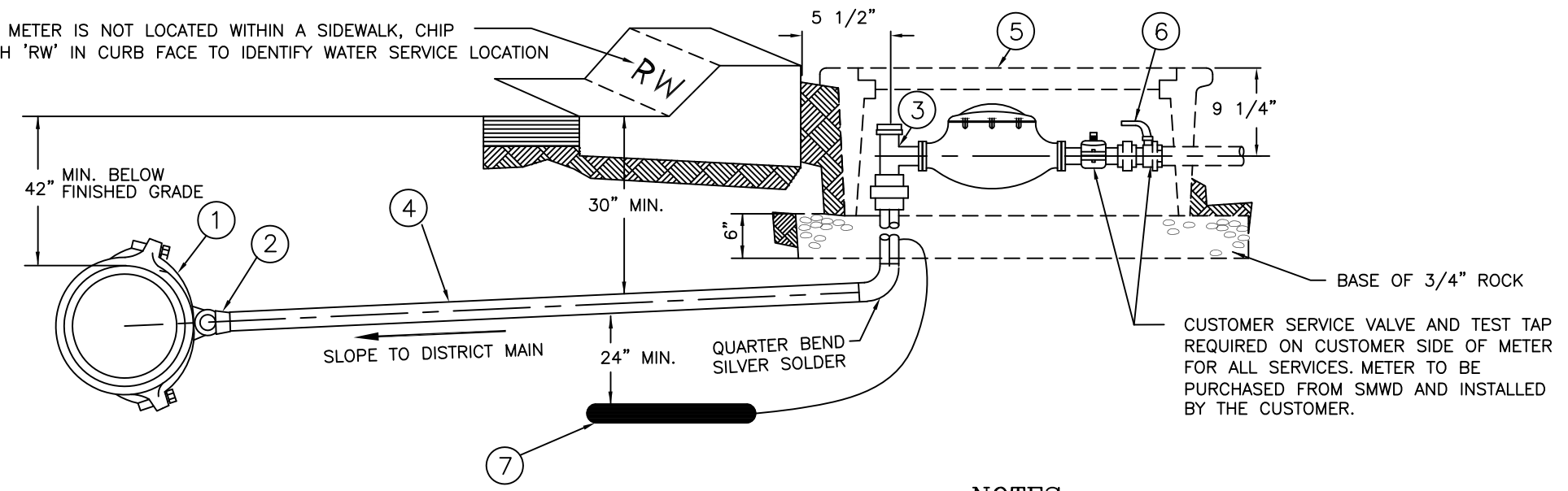
REVISION	DRAWN	APP'D	DATE
△	R.D.	D.F.	OCT. 01
△	R.D.	D.F.	AUG. 07
APPROVED			
		39535	9/25/96
CHIEF ENGINEER	RCE	DATE	

Santa Margarita Water District

1 1/2 INCH RECYCLED
WATER SERVICE

STANDARD
DRAWING
NUMBER
RW2

WHEN METER IS NOT LOCATED WITHIN A SIDEWALK, CHIP 2 INCH 'RW' IN CURB FACE TO IDENTIFY WATER SERVICE LOCATION

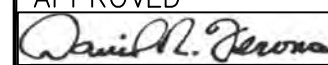


NOTES

1. DOUBLE STRAP SERVICE SADDLE REQUIRED FOR ALL MAINS.
2. INSTALL CORPORATION STOP TAP WITH KEY SIDEWAYS, IN OPEN POSITION.
3. THE CORPORATION STOP TAP WILL BE SPECIFIED BY THE PIPE MANUFACTURER, ALL DRY TAPS WILL BE MADE USING MACHINE WITH GUIDE OR PILOT TAP.
4. THE WATER SERVICE SHALL EXTEND PERPENDICULAR TO THE CENTERLINE OF THE STREET FROM THE WATER MAIN TO THE METER STOP EXCEPT IN CUL-DE-SAC ENDS, WHERE NON-PERPENDICULAR INSTALLATION IS ALLOWED.
5. NO TAP TO MAIN SHALL BE WITHIN 12" OF A COUPLING OR WITHIN 24" OF ANOTHER TAP.
6. METER BOXES SHALL BE INSTALLED DIRECTLY BEHIND SIDEWALK WHETHER SIDEWALK IS ADJACENT TO CURB OR NOT. ANGLE METER STOP SHALL BE POSITIONED TO ALLOW FULL OPERATION OF BOTH VALVES.
7. SILVER SOLDER COUPLING SHALL BE USED FOR SPLICES.
8. METER BOXES SHALL BE PURPLE IN COLOR AND PURCHASED AND INSTALLED BY CUSTOMER.
9. FOR METERS IN SLOPES, SEE DRAWING W28.
10. WRAP SERVICE LINE FROM MAINLINE TO ANGLE STOP WITH PURPLE IDENTIFICATION TAPE.
11. ANODE LEAD WIRE SHALL BE CLAMPED TO COPPER TUBING. CLAMP SHALL BE DIRECT BURIAL TYPE OF RED BRASS WITH BRASS SCREWS.
12. COPPER TUBING SHALL BE DOUBLE POLYETHYLENE ENCASED WITH 4 MIL. MINIMUM THICKNESS, AND ALL OPENINGS IN THE SLEEVES SHALL BE TAPED SHUT WITH POLYKEN # 900 TAPE WRAP, OR APPROVED EQUAL. TAPE SHALL BE APPLIED IN STRICT CONFORMANCE WITH MANUFACTURER'S RECOMMENDATIONS.
13. INSTALL SACRIFICIAL ANODE CONSISTING OF 15 LB. HIGH PURITY ZINC BAR BAGGED IN A BACKFILL OF CALCIUM, BENTONITE AND GYPSUM, WITH NO.12 SOLID COPPER LEAD WIRE. BURY ANODE IN SERVICE LINE TRENCH. SATURATE ANODE WITH WATER PRIOR TO BACKFILLING TRENCH.

CONSTRUCTION ITEMS / MATERIALS LIST

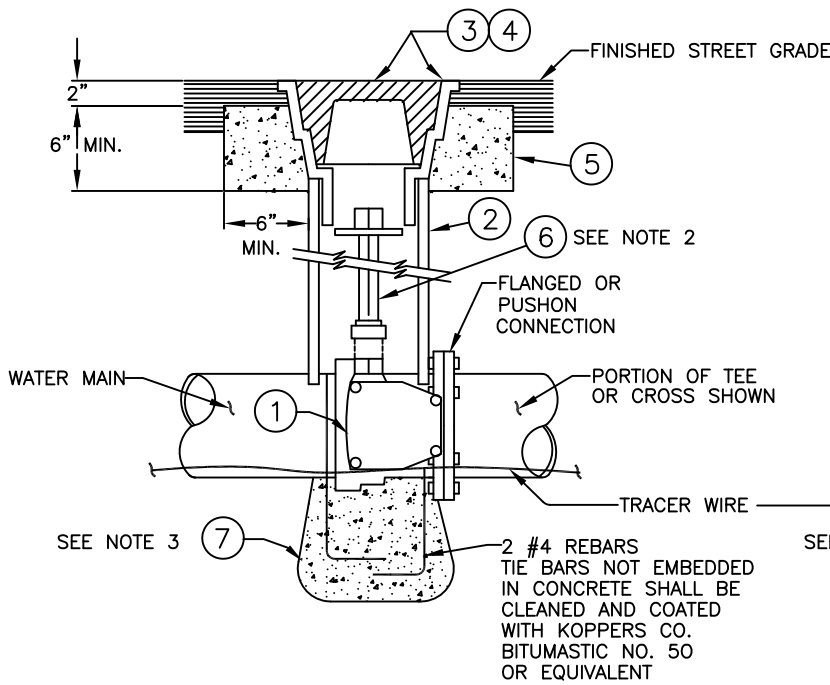
ITEM	SIZE AND DESCRIPTION	MANUFACTURER	MFR. CAT. NO. OR SPEC.
①	SERVICE SADDLE WITH IP THR'D FOR: ASBESTOS-CEMENT PIPE (ACP) POLYVINYL-CHLORIDE PIPE (PVC) DUCTILE-IRON PIPE (DIP)	ACP FORD MUELLER AY McDONALD PVC FORD MUELLER AY McDONALD DIP ROMAC	202BS BR2S 3846 202BS BR2S 3846 STYLE 306 STAINLESS STEEL
②	2" BRONZE CORPORATION STOP	FORD MUELLER JAMES JONES	FB-700 H-15025 J-1929
③	2" BRONZE ANGLE METER STOP WITH LOCKWING	FORD MUELLER JAMES JONES	FV23-666W H-14286 J-1525-F
④	2" COPPER TUBING WITH POLYETHYLENE SLEEVE	SEE NOTE 12	TYPE "K" SOFT
⑤	PURPLE METER BOX (WITH READING LID) SEE NOTE 8	EISEL	666B
⑥	CUSTOMER BALL VALVE BRASS NUTS AND BOLTS TEST TAP	AY MC DONALD JONES	6101MW 2" J1912 3/4" X 2-1/2" BRASS TEE W/ PLUG
⑦	15 LB ZINC ANODE		

REVISION	DRAWN	APP'D	DATE
△	R.D.	D.F.	OCT. 01
△	R.D.	D.F.	AUG. 07
APPROVED			
		39535	9/25/96
CHIEF ENGINEER		RCE	DATE

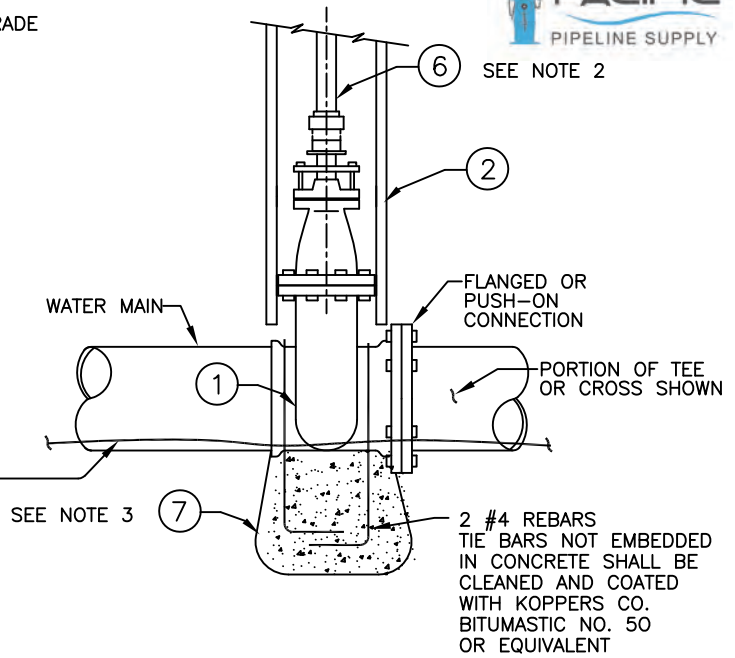
Santa Margarita Water District

2 INCH RECYCLED
WATER SERVICE

STANDARD
DRAWING
NUMBER
RW2A



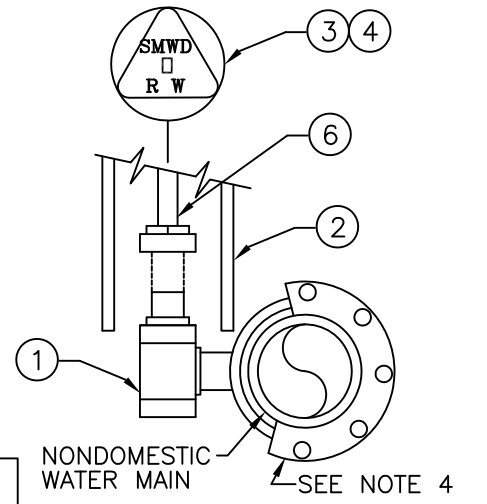
BUTTERFLY VALVE



GATE VALVE

NOTES

1. BUTTERFLY VALVE OPERATORS SHALL BE LOCATED ON THE LEFT HAND SIDE OF THE VALVE WHEN STANDING ON THE FLANGED END OF THE VALVE (AT THE TEE OR CROSS) AND LOOKING THROUGH THE VALVE TOWARD THE PIPE END. AT STREET INTERSECTIONS WHERE VALVE BOX LOCATION MAY INTERFERE WITH PROPOSED CONCRETE CROSS GUTTER, PIPELINE SHALL BE MOVED AWAY FROM STANDARD LOCATION AS REQUIRED.
2. PROVIDE VALVE STEM EXTENSION IF DEPTH TO VALVE NUT EXCEEDS 4 FEET.
3. ANCHOR BLOCK REQUIRED ONLY WHEN VALVE IS NOT FLANGED TO TEE OR CROSS.
4. ALL BURIED BOLTS SHALL BE COATED WITH "BITUMASTIC NO. 50" OR APPROVED EQUAL.



BUTTERFLY VALVE OPERATOR POSITIONS

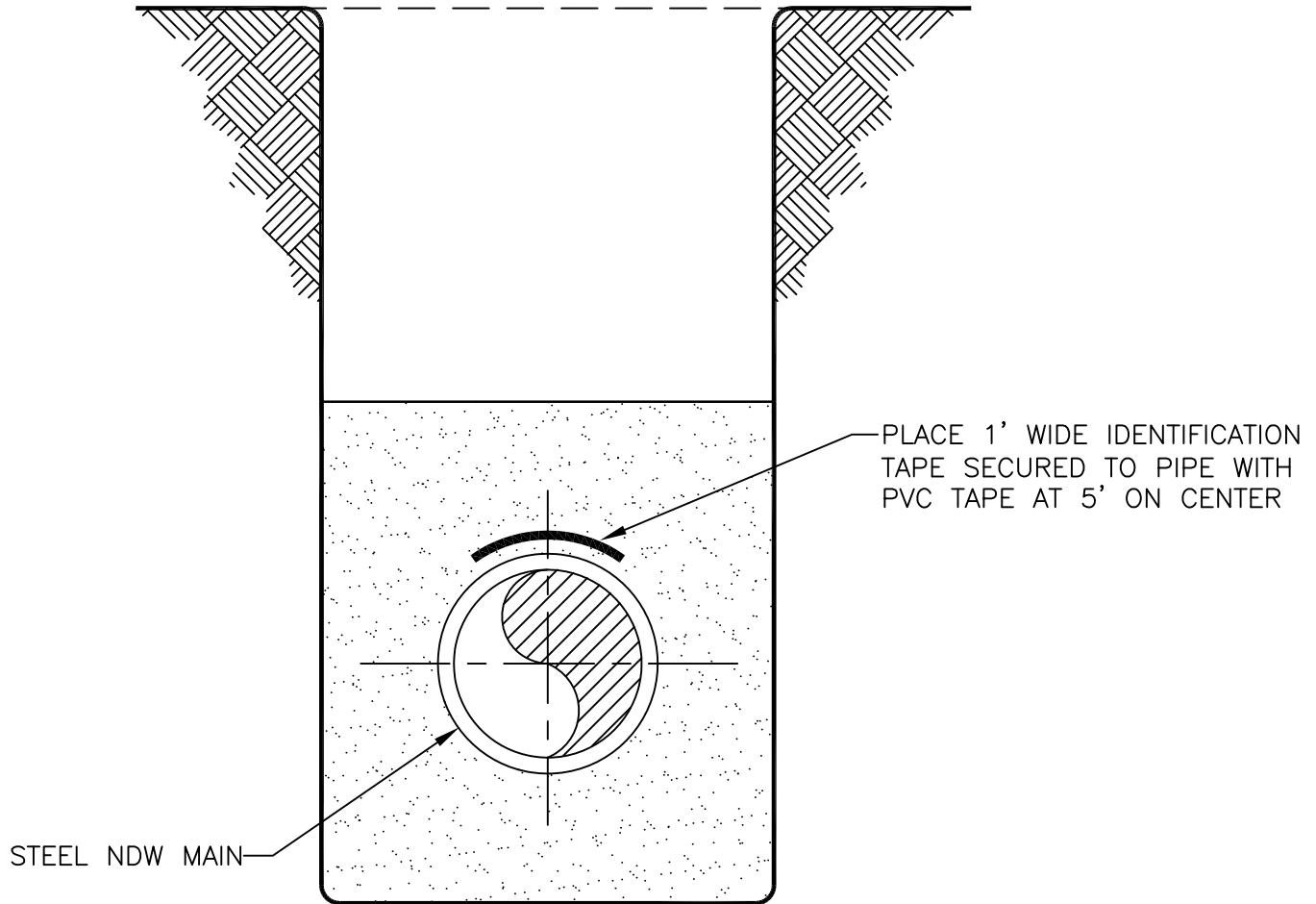
CONSTRUCTION ITEMS / MATERIALS LIST			
ITEM	SIZE AND DESCRIPTION	MANUFACTURER	MFR. CAT. NO. OR SPEC.
①	BUTTERFLY VALVE OR GATE VALVE	-----	-----
②	8" PVC PIPE	-----	-----
③	VALVE BOX AND COVER (BOX LID) (FOR RESIDENTIAL STREETS & UNIMPROVED AREAS)	BROOKS	4TT
④	HEAVY USE VALVE BOX AND COVER WITH RW CAST LID (FOR ARTERIALS)	SO.BAY FOUNDRY	SBF 1208N
⑤	CONCRETE RING, CLASS 560-C-3250	-----	AS SHOWN
⑥	VALVE STEM EXTENSION (SEE NOTE 2)	-----	SEE W-9A
⑦	ANCHOR BLOCK (SEE NOTE 3)	-----	PER W12, CONDITION I

REVISION	DRAWN	APP'D	DATE
1	R.D.	D.F.	OCT. 01
2	R.D.	D.F.	AUG. 07
APPROVED			
<i>David N. Verona</i>		39535	9/25/96
CHIEF ENGINEER	RCE	DATE	

Santa Margarita Water District

RECYCLED
 VALVE, VALVE BOX & COVER

STANDARD
 DRAWING
 NUMBER
RW3



NOTE: PVC PIPELINE SHALL BE PURPLE

REVISION	DRAWN	APP'D	DATE
1	R.D.	D.F.	OCT. 01
2	R.D.	D.F.	AUG. 07

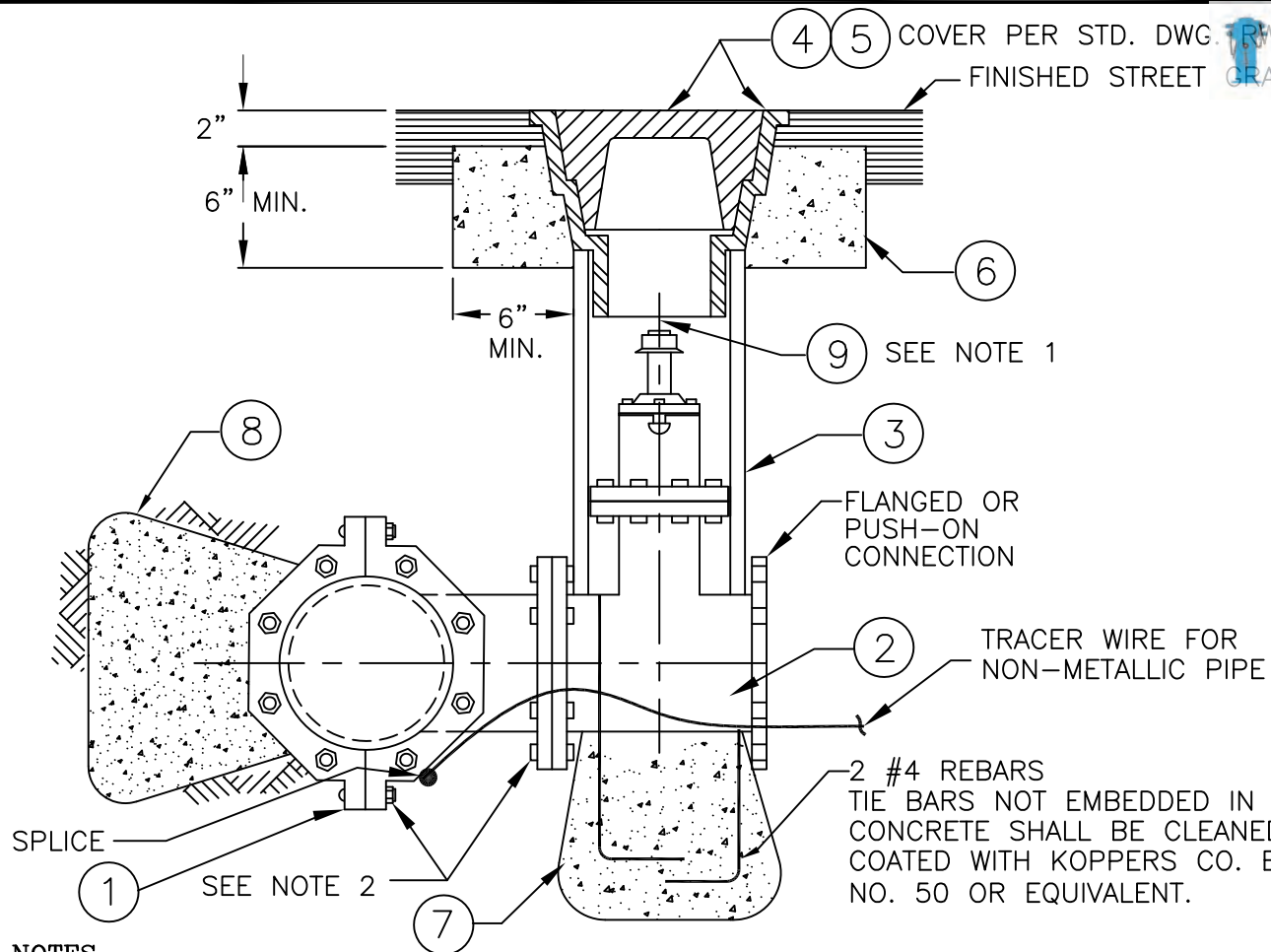
Santa Margarita Water District

PIPE IDENTIFICATION
 FOR RECYCLED
 STEEL WATER MAINS

STANDARD
 DRAWING
 NUMBER
 RW4

APPROVED

David M. Verona 39535 9/25/96
 CHIEF ENGINEER RCE DATE



NOTES

1. PROVIDE VALVE STEM EXTENSION IF DEPTH TO VALVE NUT EXCEEDS 4 FEET.
2. ALL BURIED BOLTS SHALL BE COATED WITH "BITUMASTIC NO. 50" OR APPROVED EQUAL.
3. TAP ON EXISTING MAIN SHALL BE ONE SIZE LESS AND EDGE OF TAPPING SLEEVE SHALL BE MIN. 18" FROM A COLLAR OR SERVICE.

CONSTRUCTION ITEMS / MATERIALS LIST

ITEM	SIZE AND DESCRIPTION	MANUFACTURER	MFR. CAT. NO. OR SPEC.
① ②	TAPPING SLEEVE AND VALVE	MUELLER, CLOW OR APPROVED EQUAL.	SEE SPECIFICATIONS FOR VALVES
③	8" PVC PIPE	-----	-----
④ ⑤	VALVE BOX AND COVER	-----	SEE RW 3
⑥	CONCRETE RING, CLASS 560-C-3250	-----	AS SHOWN
⑦	ANCHOR BLOCK	-----	PER W12, CONDITION 1
⑧	THRUST BLOCK	-----	PER W12, CONDITION 1
⑨	VALVE STEM EXTENSION	-----	SEE W-9A

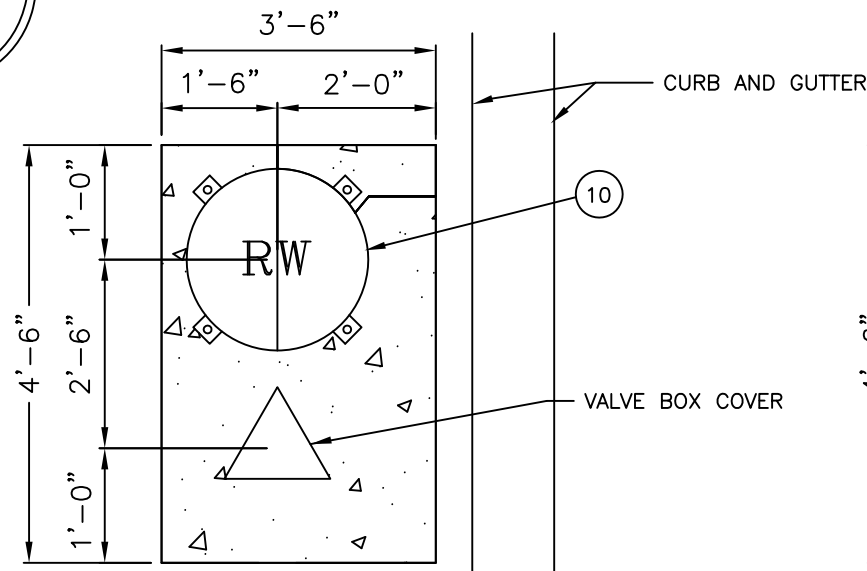
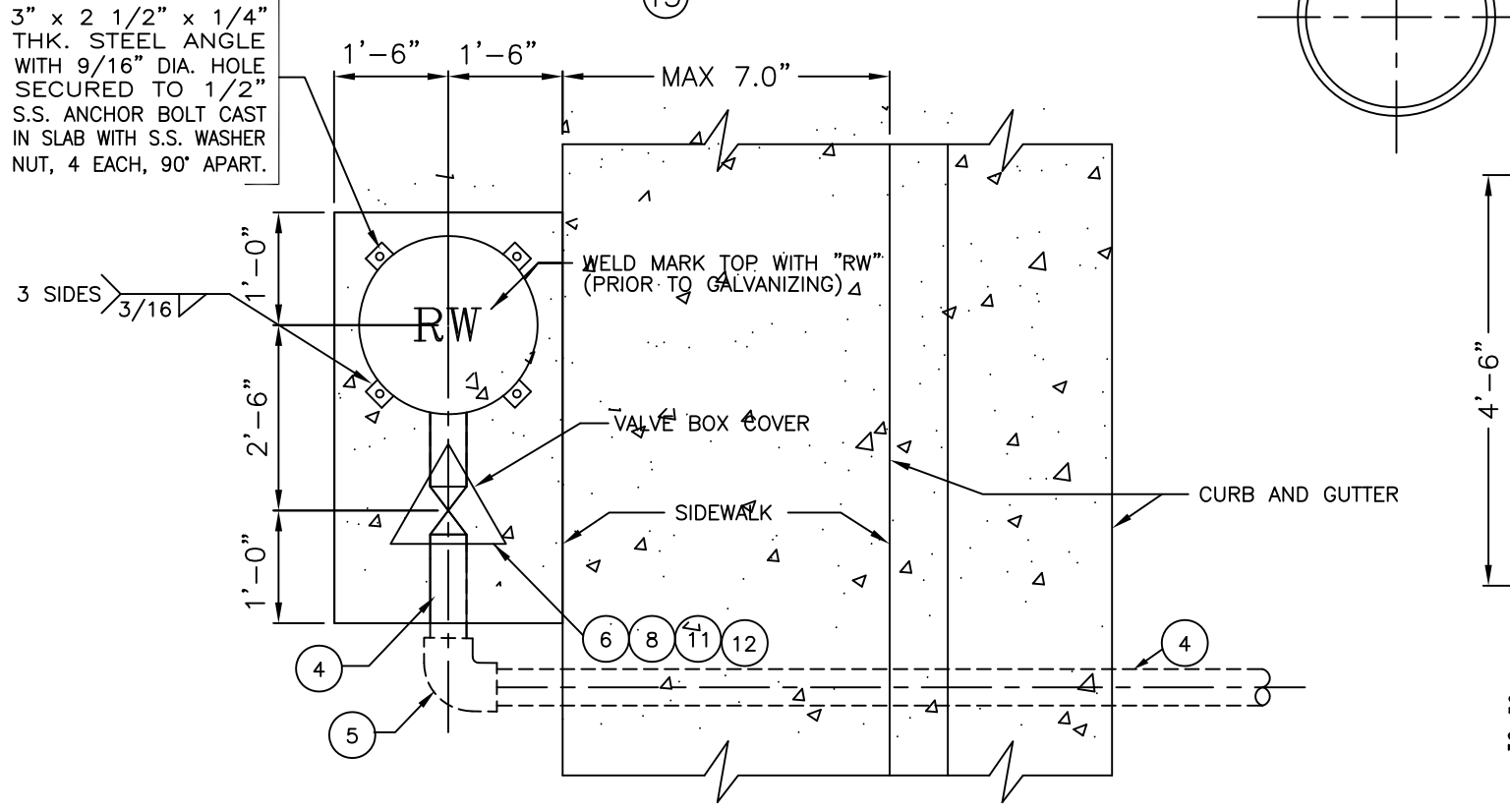
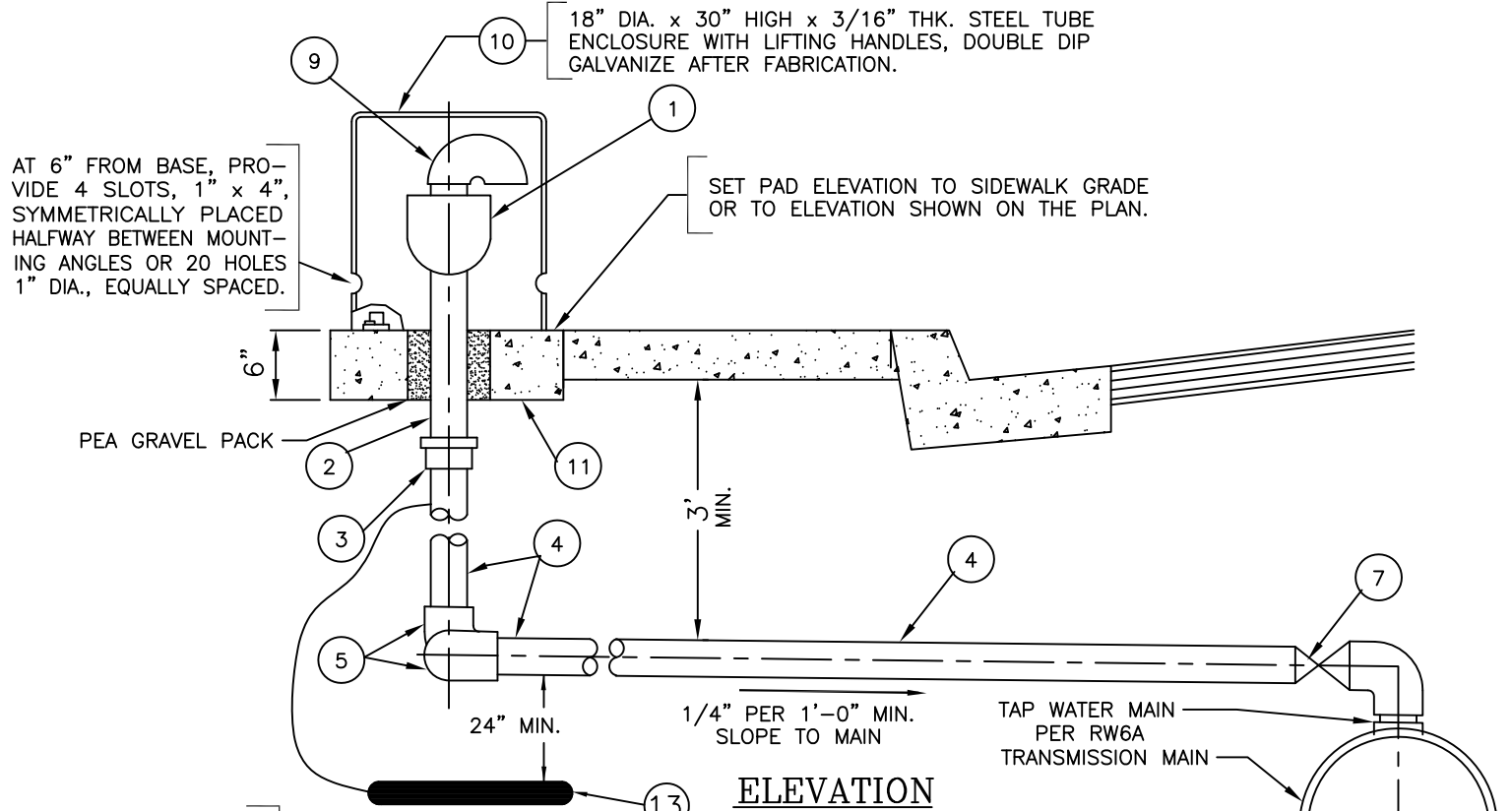
REVISION	DRAWN	APP'D	DATE
1	R.D.	D.F.	OCT. 01
2	R.D.	D.F.	AUG. 07
APPROVED			
<i>David N. Verona</i>		39535	9/25/96
CHIEF ENGINEER	RCE	DATE	

Santa Margarita Water District

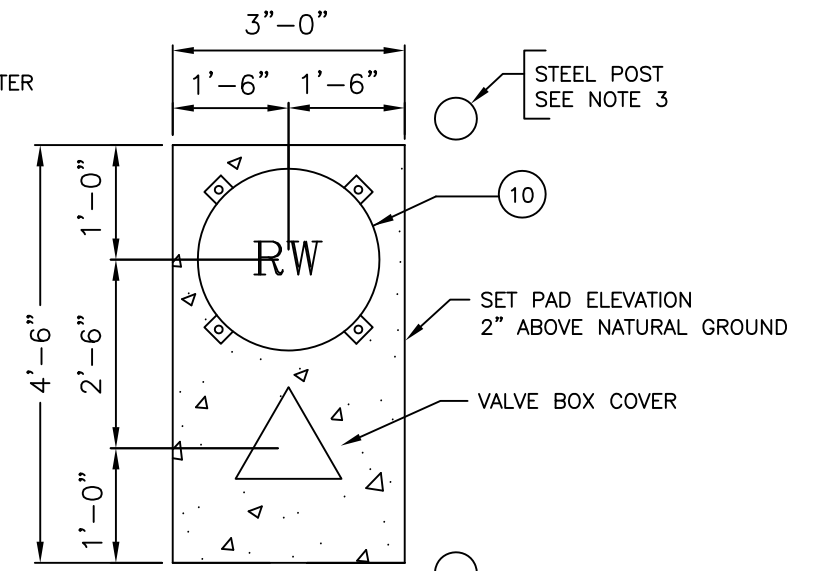
TAP OF RECYCLED
 ACP, PVC OR DIP MAINS

STANDARD
 DRAWING
 NUMBER
RW5

ITEM	SIZE AND DESCRIPTION	MANUFACTURER	MFR. CAT. NO. OR SPEC.
①	1" (2") AIR RELEASE AND VACUUM VALVE	AFCO CRISPEN	143 C (145 C) UL10 (UL20)
②	1" (2") BRASS NIPPLE	----	----
③	1" (2") SILVER SOLDER COPPER FITTING	----	----
④	1" (2") COPPER TUBING WITH POLYETHYLENE SLEEVE PER RW1,RW2,RW2A	----	TYPE "K" SOFT
⑤	1" (2") 90° LONG RADIUS SILVER SOLDER SWEAT ELBOW	----	----
⑥	1" (2") BRONZE BALL VALVE	JONES MUELLER	J1900 H-10203
⑦	1" (2") WATER SERVICE PVC OR DIP MAINS, PER RW1, RW2, RW2A, RW6A, ITEMS 1 & 2	----	----
⑧	VALVE BOX AND COVER PER RW3	----	----
⑨	1" (2") GALVANIZED DISCHARGE NIPPLE (2-90° ELL, 1 NIPPLE) WITH S.S. THREADED SCREENED OUTLET ON DOWN FACING 90° ELBOW	----	----
⑩	AIR VAC VALVE ENCLOSURE, CONSTRUCTED AS SHOWN	----	----
⑪	CONCRETE PAD, CLASS 560-C-3250	----	----
⑫	VALVE STEM EXTENSION (SEE NOTE 2)	----	PER W-9A
⑬	15 LB ZINC ANODE PER RW1,RW2 RW2A	----	----



SIDEWALK WIDER THAN 7 FEET OR SIDEWALK NOT ADJACENT TO CURB



UNIMPROVED AREA

NOTES

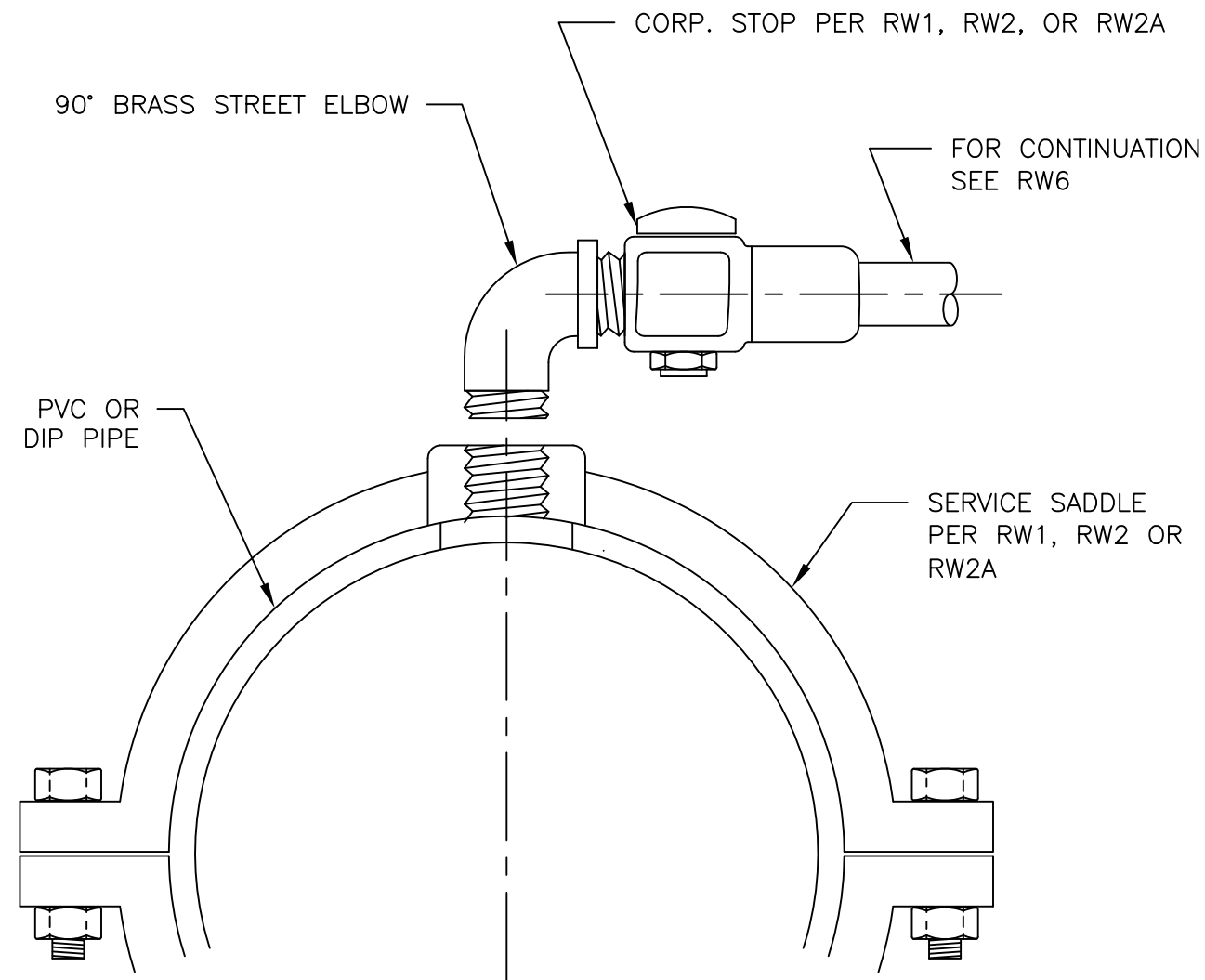
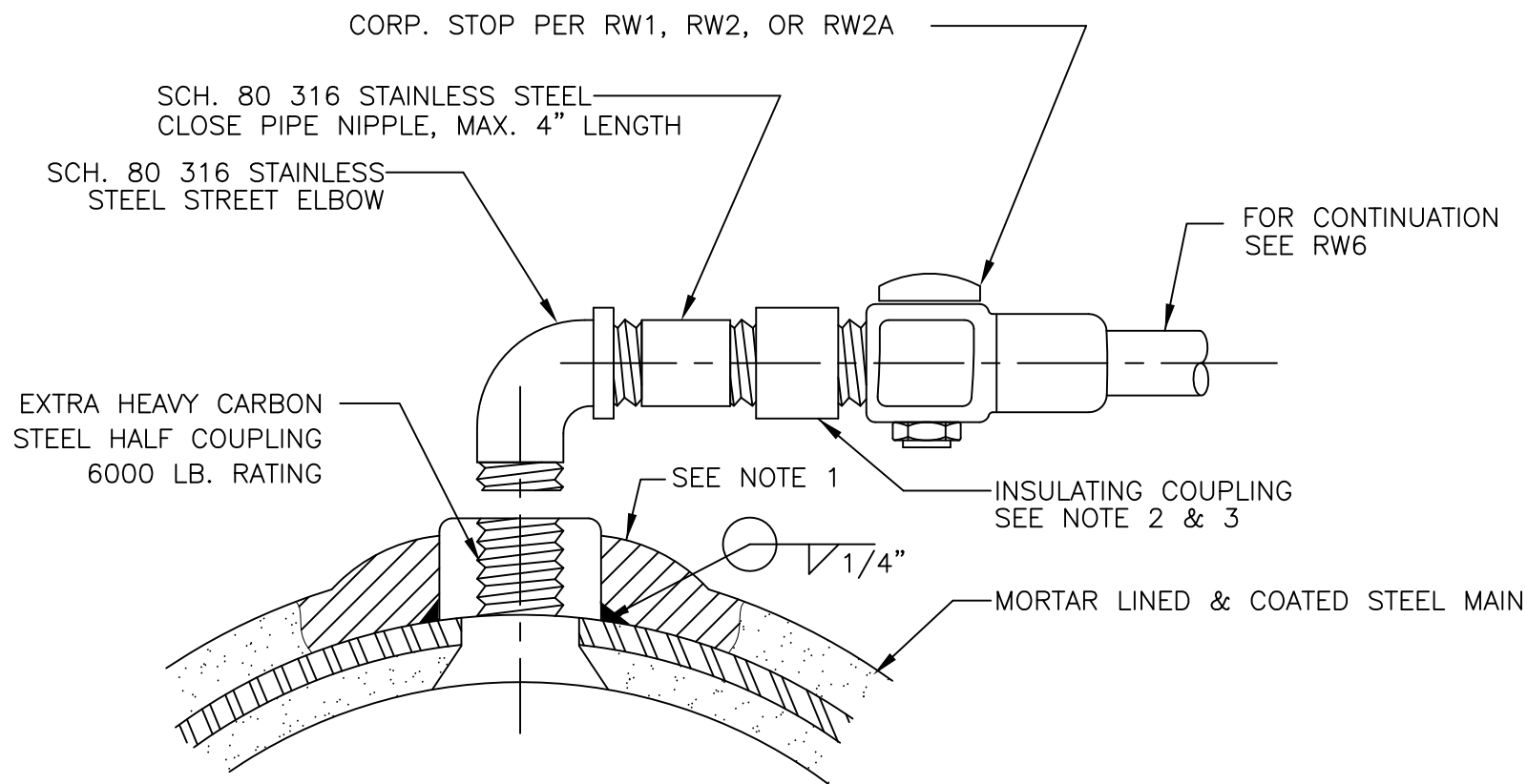
- ALL BURIED BOLTS SHALL BE COATED WITH "BITUMASTIC NO. 50" OR APPROVED EQUAL.
- PROVIDE VALVE STEM EXTENSION TO WITHIN 1 FOOT OF FINISHED SURFACE.
- IN AREAS WHERE NO CURB OR BERM EXISTS, OR WHERE THERE IS ONLY ROLLED CURB AND GUTTER, INSTALL ONE 3" GALVANIZED STEEL POST (PAINTED IN ACCORDANCE WITH W7) AT EACH CORNER OF CONCRETE PAD ON TRAFFIC SIDE. IMBED POSTS IN 24" OF CONCRETE 2' BELOW GRADE AND EXTEND 3' ABOVE GRADE.
- FOR A/V ASSEMBLIES IN SLOPES, SEE DRAWING W28.

REVISION	DRAWN	APP'D	DATE
△	R.D.	D.F.	OCT. 01
△	R.D.	D.F.	AUG. 07
APPROVED			
<i>David M. Terona</i>		39535	9/25/96
CHIEF ENGINEER		RCE	DATE

Santa Margarita Water District

1" & 2" RECYCLED COMBINATION AIR RELEASE AND VACUUM VALVE ASSEMBLY

STANDARD DRAWING NUMBER RW6



NOTES

1. ALL LINING AND COATING DAMAGED OR REMOVED FOR THE INSTALLATION OF THE SERVICE TAP SHALL BE REPAIRED OR REPLACED TO THE SATISFACTION OF THE SMWD INSPECTOR.
2. COUPLING SHALL BE LOCKINVAR "V"-LINE COUPLINGS RATED AT 1000 PSI AS DISTRIBUTED BY CORROSION CONTROL PRODUCTS CO., GARDENA, CA.
3. COAT EXPOSED PORTIONS OF HALF COUPLING, GALV. STEEL PIPE AND INSULATING COUPLING WITH "BITUMASTIC NO. 50" OR APPROVED EQUAL.
4. THIS INSTALLATION SHALL BE USED FOR A/V CONNECTIONS UP TO 2 INCHES ONLY.
5. BACKFILL ENTIRE AIR/VACUUM LATERAL WITH 2 SACK CEMENT SLURRY.

**AIR/VACUUM
 CONNECTION FOR STEEL MAINS**

N. T. S.

**AIR/VACUUM
 CONNECTION FOR PVC OR DIP**

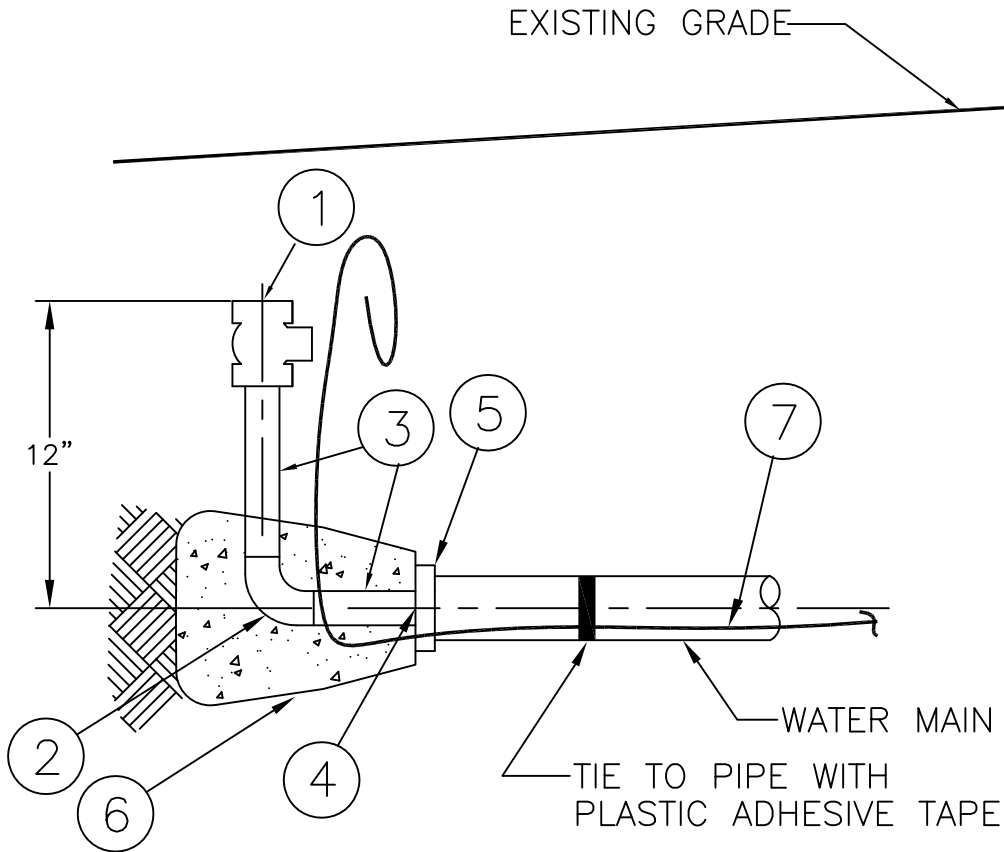
N. T. S.

REVISION	DRAWN	APP'D	DATE
△	R.D.	D.F.	OCT. 01
△	R.D.	D.F.	AUG. 07
APPROVED			
<i>David M. Jerome</i>		39535	9/25/96
CHIEF ENGINEER		RCE	DATE

Santa Margarita Water District

RECYCLED
 WATER MAIN TAPS FOR
 AIR/VACUUM ASSEMBLY

STANDARD
 DRAWING
 NUMBER
RW6A



NOTE:

1. WRAP BRASS PIPE WITH PURPLE IDENTIFICATION TAPE.
2. TEMPORARY B.O. REQUIRED AT ALL STUB OUTS REGARDLESS OF LENGTH.

CONSTRUCTION ITEMS / MATERIALS LIST

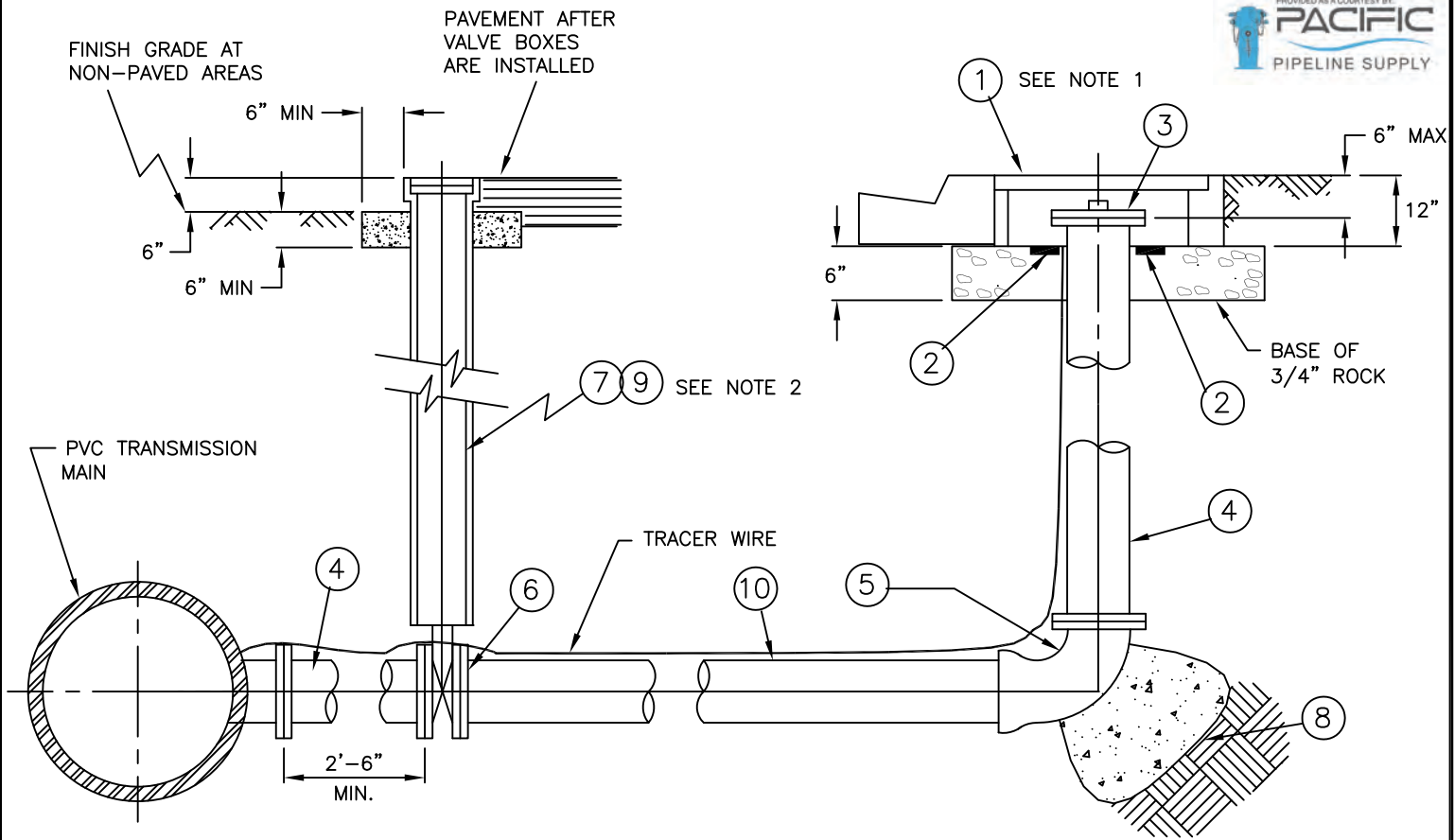
ITEM	SIZE AND DESCRIPTION	MANUFACTURER	MFR. CAT. NO. OR SPEC.
①	2" BRONZE BALL VALVE WITH 2" BRASS PLUG	MUELLER	H-10203
②	2" DIAMETER BRASS 90° ELBOW	-----	-----
③	2" DIAMETER BRASS NIPPLES	-----	-----
④	PVC NYLON INSULATING BUSHING	-----	-----
⑤	CAST IRON PLUG, 2 1/2" I.P. THREAD TAPPED	-----	-----
⑥	THRUST BLOCK, PER W12 CONDITION III	-----	-----
⑦	TRACER WIRE #12 CU WITH HMWPE INSULATION		

REVISION	DRAWN	APP'D	DATE
1	RD	DF	OCT. 01
2	RD	DF	AUG. 07
APPROVED			
<i>David N. Terona</i>		39535	9/25/96
CHIEF ENGINEER		RCE	DATE

Santa Margarita Water District

TEMPORARY RECYCLED
 2" BLOW OFF

STANDARD
 DRAWING
 NUMBER
 RW7



NOTES

1. INSTALL METER BOX DIRECTLY BEHIND CURB OR AS DIRECTED ON THE PLANS.
2. PROVIDE VALVE STEM EXTENSION IF DEPTH TO VALVE NUT EXCEEDS 4 FEET.
3. WRAP SERVICE LINE FROM MAINLINE TO ANGLE STOP WITH PURPLE IDENTIFICATION TAPE.
4. ATTACH ANODE PER PROJECT SPECIFICATIONS AND BOND ACROSS D.I. JOINTS PER SMWD STD. DWG. W25.

CONSTRUCTION ITEMS / MATERIALS LIST

ITEM	SIZE AND DESCRIPTION
①	METER BOX WITH PURPLE LID, EISEL 437 OR APPROVED EQUAL.
②	1 x 3 REDWOOD BLOCKING
③	4" BLIND FLANGE WITH 2" I.P. TAP AND PVC THREADED PLUG
④	4" FLG. D.I.P. SPOOL LENGTH AS REQD.
⑤	4" FLANGED X PO D.I.P. 90° ELBOW.
⑥	4" RW GATE VALVE, FLANGED X P.O.
⑦	VALVE BOX AND COVER PER SMWD DWG. NO. RW-3.
⑧	CONCRETE THRUST BLOCK PER W12, CONDITION II
⑨	VALVE STEM EXTENSION (SEE NOTE 2)
⑩	4"AWWA C-900 PURPLE PVC

REVISION	DRAWN	APP'D	DATE
①	R.D.	D.F.	OCT. 01
②	R.D.	D.F.	AUG. 07

Santa Margarita Water District

APPROVED
Quil N. Terona 39535 8/04/01
 CHIEF ENGINEER RCE DATE

4" BLOWOFF PVC
 MAIN CONNECTION

STANDARD
 DRAWING
 NUMBER
 RW8