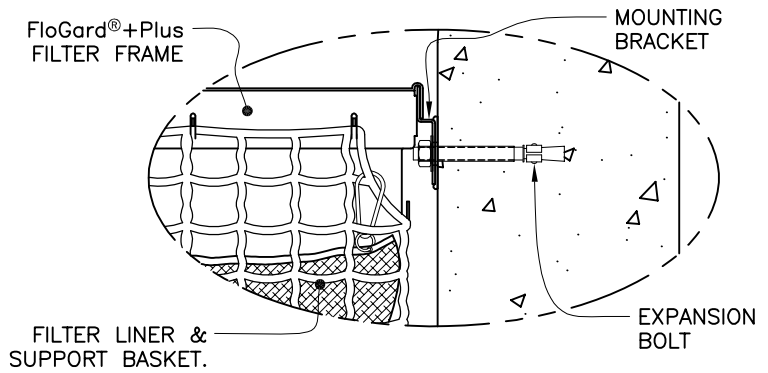


SPECIFIER CHART

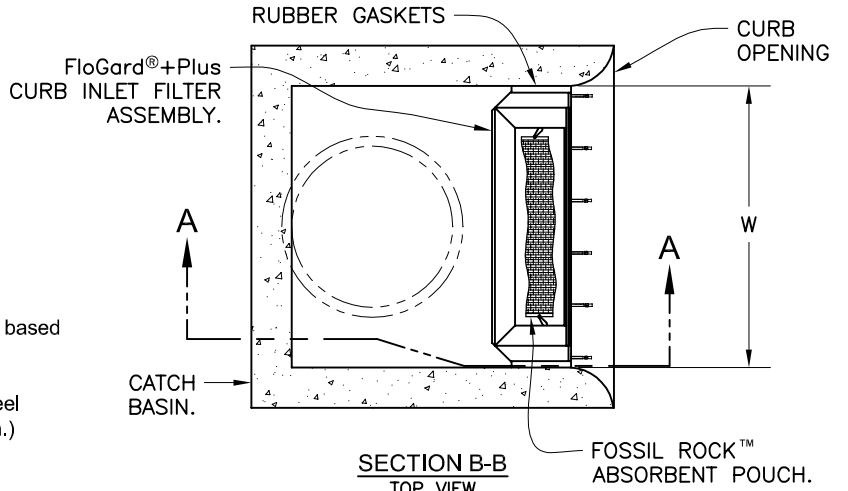
MODEL NO.	Curb Opening Width - W -	Storage Capacity - Cu. Ft. -	Filtered Flow Rate - GPM/CFS -	Bypass Flow Rate - GPM/CFS -
FGP-24CI	2.0' (24")	.95	338 / .75	2,513 / 5.6
FGP-30CI	2.5' (30")	1.20	450 / 1.00	3,008 / 6.7
FGP-36CI	3.0' (36")	1.50	563 / 1.25	3,547 / 7.9
FGP-42CI	3.5' (42")	1.80	675 / 1.50	3,951 / 8.8
FGP-48CI	4.0' (48")	2.10	768 / 1.76	4,445 / 9.9
FGP-5.0CI	5.0' (60")	2.40	900 / 2.00	5,208 / 11.6
FGP-6.0CI	6.0' (72")	3.05	1,126 / 2.51	6,196 / 13.8
FGP-7.0CI	7.0' (84")	3.65	1,350 / 3.01	7,139 / 15.9
FGP-8.0CI	8.0' (96")	4.25	1,576 / 3.51	8,082 / 18.0
FGP-10.0CI	10.0' (120")	4.85	1,800 / 4.01	9,833 / 21.9
FGP-12.0CI	12.0' (144")	6.10	2,252 / 5.02	11,764 / 26.2
FGP-14.0CI	14.0' (168")	7.30	2,700 / 6.02	13,515 / 30.1
FGP-16.0CI	16.0' (192")	8.55	3,152 / 7.02	15,446 / 34.4
FGP-18.0CI	18.0' (216")	9.45	3,490 / 7.78	17,152 / 38.2
FGP-21.0CI	21.0' (252")	10.95	4,050 / 9.02	19,891 / 44.3
FGP-28.0CI	28.0' (336")	14.60	5,400 / 12.03	26,311 / 58.6

NOTES:

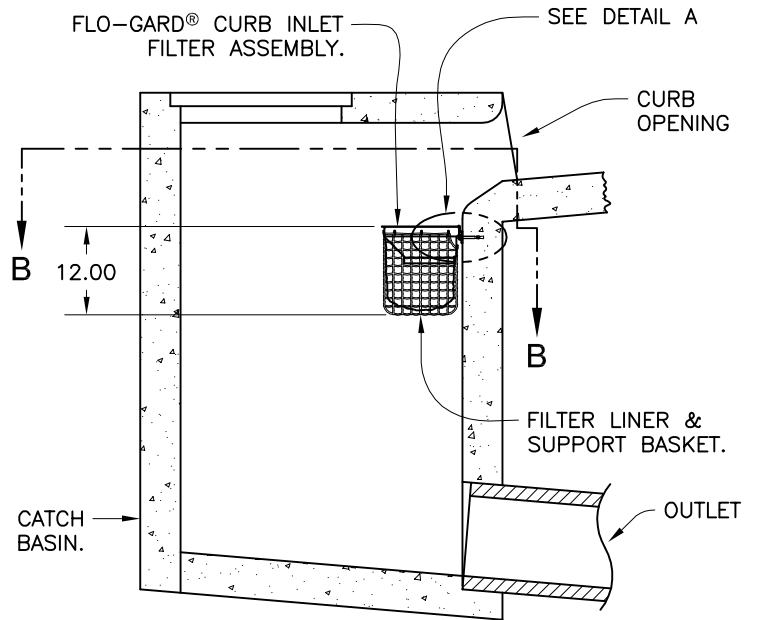
- FloGard®+PLUS filter inserts shall be installed across the entire width of curb opening. Storage capacity and clean flow rates are based on full width installation.
- Filter insert shall be attached to the catch basin with stainless steel expansion anchor bolts & washers (3/8" x 2-1/2" minimum length.) See detail A.
- FloGard®+PLUS filter inserts are designed with a debris trap/energy dissipator for the retention of floatables and collected sediments .
- Filter support frame shall be constructed from stainless steel Type 304.
- Filter liner shall be constructed from durable polypropylene, woven, monofilament, geotextile. Filter liner shall not allow the retention of water between storm events.
- Filter inserts are supplied with "clip-in" filter pouches utilizing FOSSIL ROCK™ filter medium for the collection and retention of petroleum hydrocarbons (oils & greases).
- FloGard®+PLUS filter inserts and FOSSIL ROCK™ filter medium pouches must be maintained in accordance with manufacturer recommendations.
- FloGard +PLUS filter inserts are available in standard lengths of 24", 30", 35", 42" & 48" and may be installed in various length combinations (end to end) to fit length of noted catch basin.
- Clean flow rates are "calculated" based on liner flow rate of 140 gallons per minute per square foot of material, a factor of .50 has been applied to allow for anticipated sediment & debris loading. An additional safety factor of between .25 & .50 may be applied to allow for site specific sediment loading.
- Storage capacity reflects maximum solids collection prior to impending "initial" filtering bypass. The "ultimate" high-flow bypass will not become impeded due to maximum solids loading.



DETAIL A
MOUNTING BRACKET & EXPANSION BOLTS
SEE NOTE 2
SCALE 6/1



SECTION B-B
TOP VIEW
SCALE 1/1



SECTION A-A
SIDE VIEW
SCALE 1/1

TITLE

FloGard® +PLUS
CATCH BASIN FILTER INSERT
(Curb Inlet Style)



KriStar Enterprises, Inc.

360 Sutton Place, Santa Rosa, CA 95407
Ph: 800.579.8819, Fax: 707.524.8186, www.kristar.com

DRAWING NO. FGP-0002	REV D	ECO 0059 JPR 12/30/08	DATE JPR 11/3/06	SHEET 1 OF 1
-------------------------	----------	--------------------------	---------------------	--------------