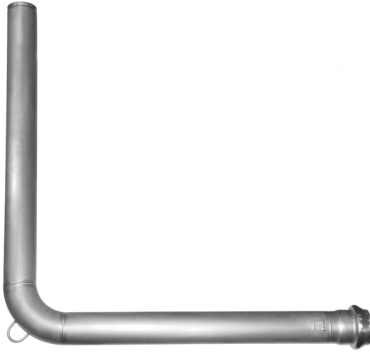


SPECIFICATION SUBMITTAL SHEET



FEATURES

SIZES: 4" 6" 8"

Maximum working water pressure 200 PSI
 Maximum working water temperature 140°F

End Connections

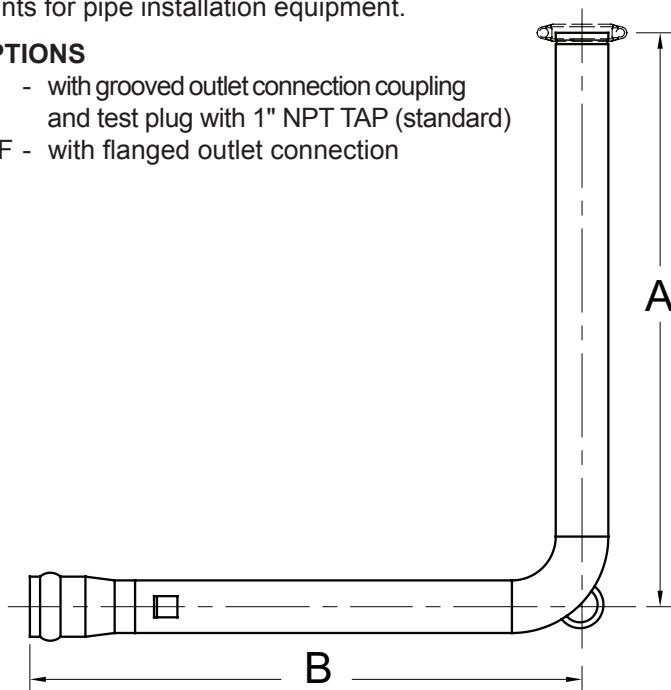
OUTLET (Grooved for steel pipe) AWWA C606
 (Flanged) AWWA C207
 Class D

INLET Push-On AWWA C900
 (PVC or Ductile Iron pipe)

Brackets on inlet side provide attachment points for pipe installation equipment.

OPTIONS

- with grooved outlet connection coupling and test plug with 1" NPT TAP (standard)
- F - with flanged outlet connection



DIMENSIONS & WEIGHTS (do not include pkg.)

SIZE	DIMENSIONS (approximate)				WEIGHT			
	A		B		GROOVED		FLANGED	
	in.	mm	in.	mm	lbs.	kg	lbs.	kg
4	72	1829	72	1829	77	35	80	37
6	72	1829	72	1829	123	56	123	56
8	72	1829	72	1829	139	63	136	62

APPLICATION

WILKINS Model WBR In Building Risers are designed for use to connect a water supply line from outside the building to the water system inside the building.

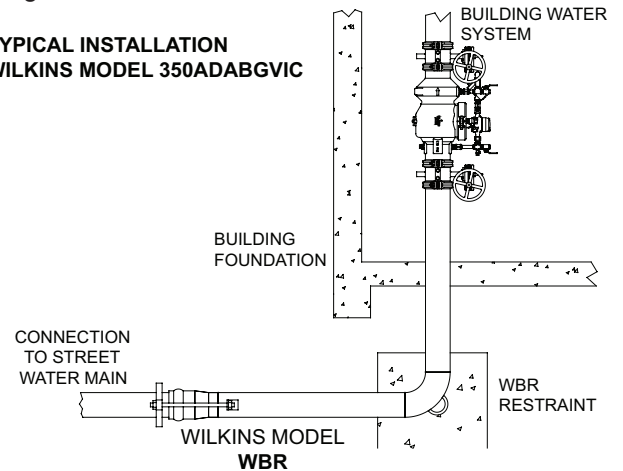
APPROVALS

UL® Listed
 ULC® Listed
 FM® Approved

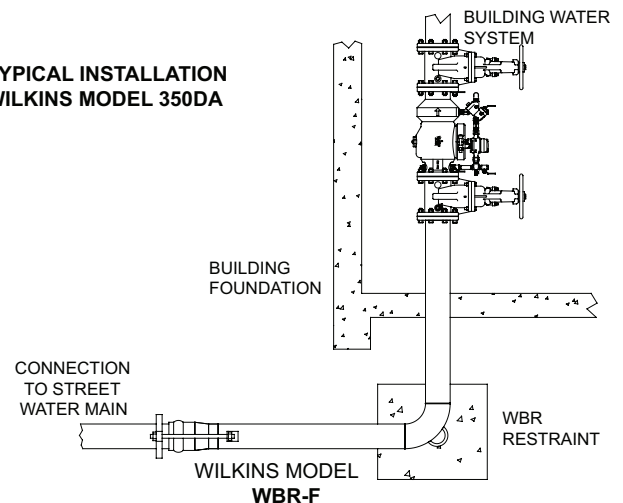
MATERIALS

Main Body	304 Stainless Steel
Gasket	SBR - UL Listed
Test Plug	Iron
Grooved Coupling	Ductile Iron
Coupling Gasket	EPDM

TYPICAL INSTALLATION WILKINS MODEL 350ADABGVIC



TYPICAL INSTALLATION WILKINS MODEL 350DA



TYPICAL INSTALLATION

Local codes shall govern installation requirements. To be installed in accordance with the manufacturers' instructions and prevailing government and industry standards and codes.