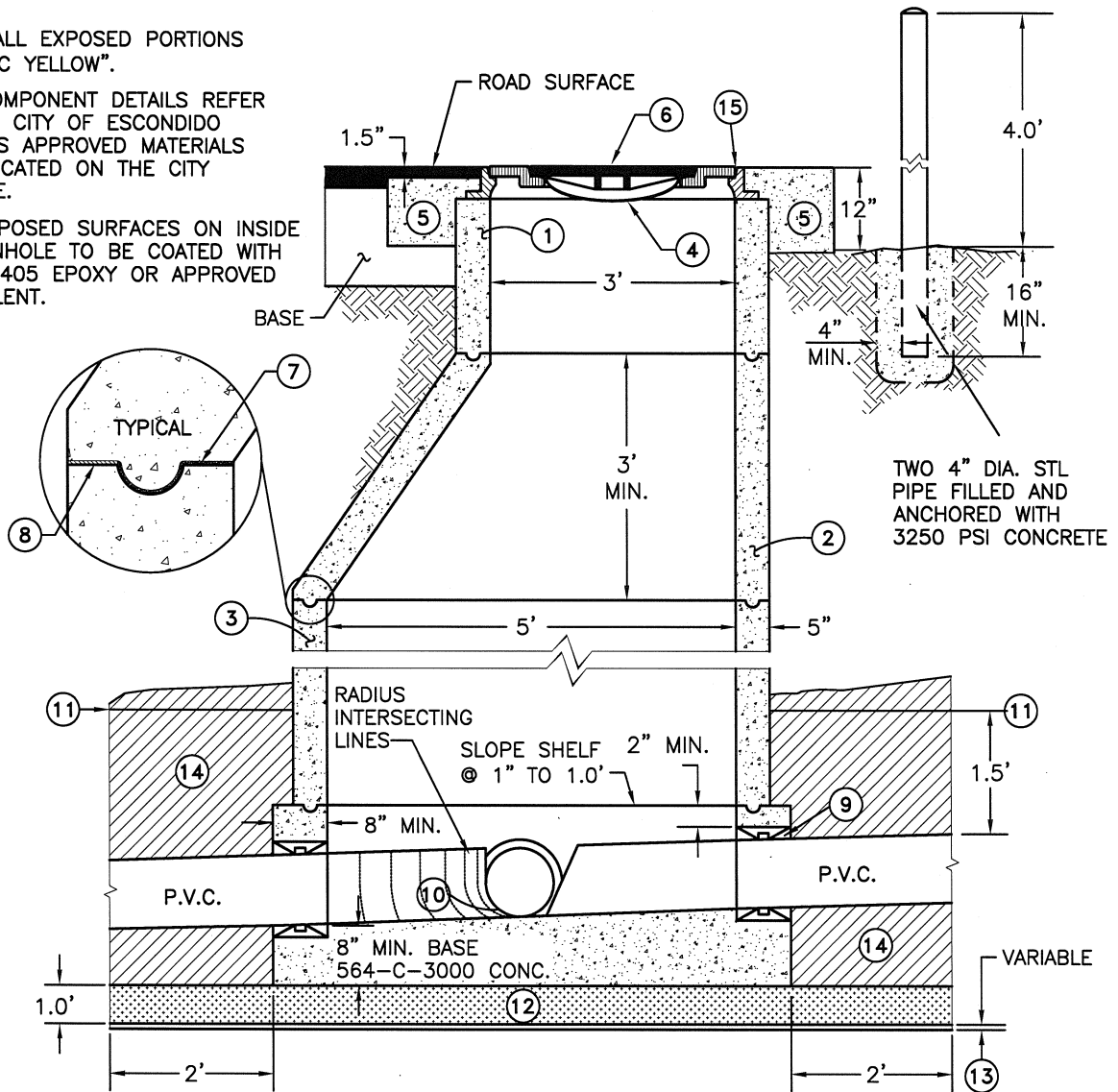


NOTES:

PAINT ALL EXPOSED PORTIONS "TRAFFIC YELLOW".

FOR COMPONENT DETAILS REFER TO THE CITY OF ESCONDIDO UTILITIES APPROVED MATERIALS LIST LOCATED ON THE CITY WEBSITE.

ALL EXPOSED SURFACES ON INSIDE OF MANHOLE TO BE COATED WITH RAVEN 405 EPOXY OR APPROVED EQUIVALENT.



- ① PRECAST GRADE RING 3'x18" MAXIMUM, ASTM C-478.
- ② PRECAST CONE PER ASTM C-478. HEIGHT - NOT LESS THAN 3.0'. VERTICAL SIDE SHALL BE ON THE UPSTREAM SIDE.
- ③ PRECAST MANHOLE SECTION PER ASTM C-478
- ④ 24" DIAMETER INFLOW PROTECTOR COVER - FRW OR EQUAL.
- ⑤ CONCRETE COLLAR 10" x 10"
- ⑥ CAST IRON MANHOLE FRAME & COVER. SEE SDRSD M-3. CAULK SPACE BETWEEN FRAME & OUTER COVER PIECE FOR WATER TIGHT SEAL.
- ⑦ CLASS "C" MORTAR
- ⑧ ROPE MYSTIK SEALANT. USE KWIKSET BRAND "KWIKSEAL" 3/4" OR EQUIVALENT.
- ⑨ MANHOLE ADAPTER PER SECTION 208-6 OF THE STANDARD SPECIFICATIONS.
- ⑩ CHANNEL DEPTH = I.D. OF PIPE. CHANNELS TO BE "U" SHAPED. ALL CHANNEL BOTTOMS TO HAVE RADIUS OF PIPE.
- ⑪ 6" STRIP OF GREEN NONMETALLIC DETECTION TAPE.
- ⑫ 3/4" GRADED CRUSHED ROCK BEDDING. 12" MIN. THICKNESS EXTENDED 2' BEYOND CONC. MANHOLE BASE.
- ⑬ PAY LIMITS FOR ADDITIONAL 3/4" GRADED CRUSHED ROCK BEDDING WHEN REQUIRED BY FIELD ENGINEER.
- ⑭ PIPE BEDDING PER ESCONDIDO STD DWG G-2-E.
- ⑮ 36" OUTER LID SHALL HAVE NEOPRENE GASKET.

LEGEND ON PLANS

APPROVED:		DATE: 4-2-2014
UTILITY ENGINEER		
REVISED	APPROVED	

CITY OF ESCONDIDO
 UTILITY DEPARTMENT

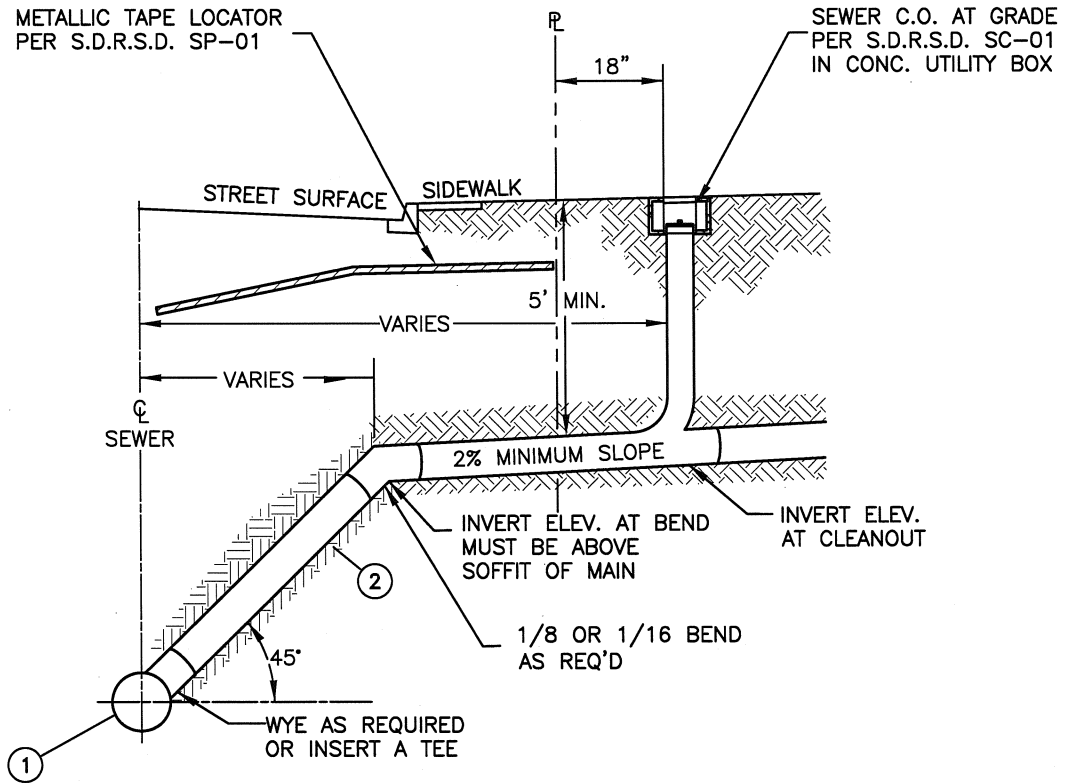
SEWER MANHOLE

SCALE:
 NOT TO SCALE

STANDARD DRAWING NO.
S-1-E

NOTES:

* REPLACES S.D.R.S.D. SS-01.



- ① SEWER MAIN
- ② BEDDING PER G-2-E

STAMP OR CHISEL A 3" HIGH "S" IN CURB FACE AT THE SEWER LATERAL * LOCATION

LEGEND ON PLANS ———— (S)

APPROVED: *[Signature]* DATE: 4-2-2014
 UTILITY ENGINEER

CITY OF ESCONDIDO
 UTILITY DEPARTMENT

SCALE:
 NOT TO SCALE

REVISED	APPROVED

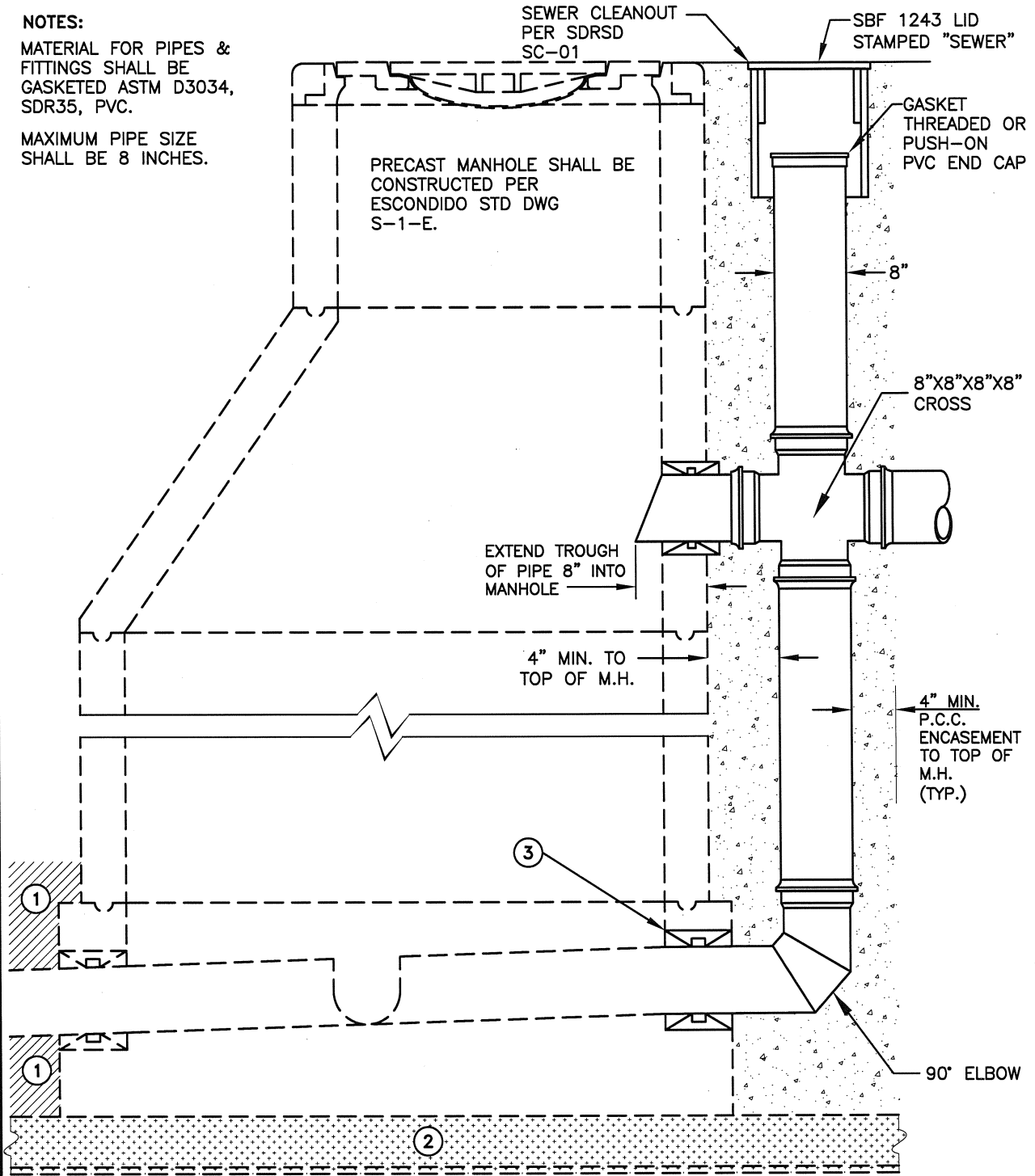
4" & 6"
SEWER LATERAL

STANDARD DRAWING NO.
S-2-E

NOTES:

MATERIAL FOR PIPES & FITTINGS SHALL BE GASKETED ASTM D3034, SDR35, PVC.

MAXIMUM PIPE SIZE SHALL BE 8 INCHES.



- ① PIPE BEDDING PER ESCONDIDO STD DWG G-1-E (TYP. ALL PIPES)
- ② PER ITEM ⑫ & ⑬ ON ESCONDIDO STD DWG S-1-E
- ③ MANHOLE ADAPTER PER SECTION 208-6 OF THE STANDARD SPECIFICATIONS.

APPROVED: *[Signature]* DATE: 4-2-2014
 UTILITY ENGINEER

CITY OF ESCONDIDO
 UTILITY DEPARTMENT

SCALE:
 NOT TO SCALE

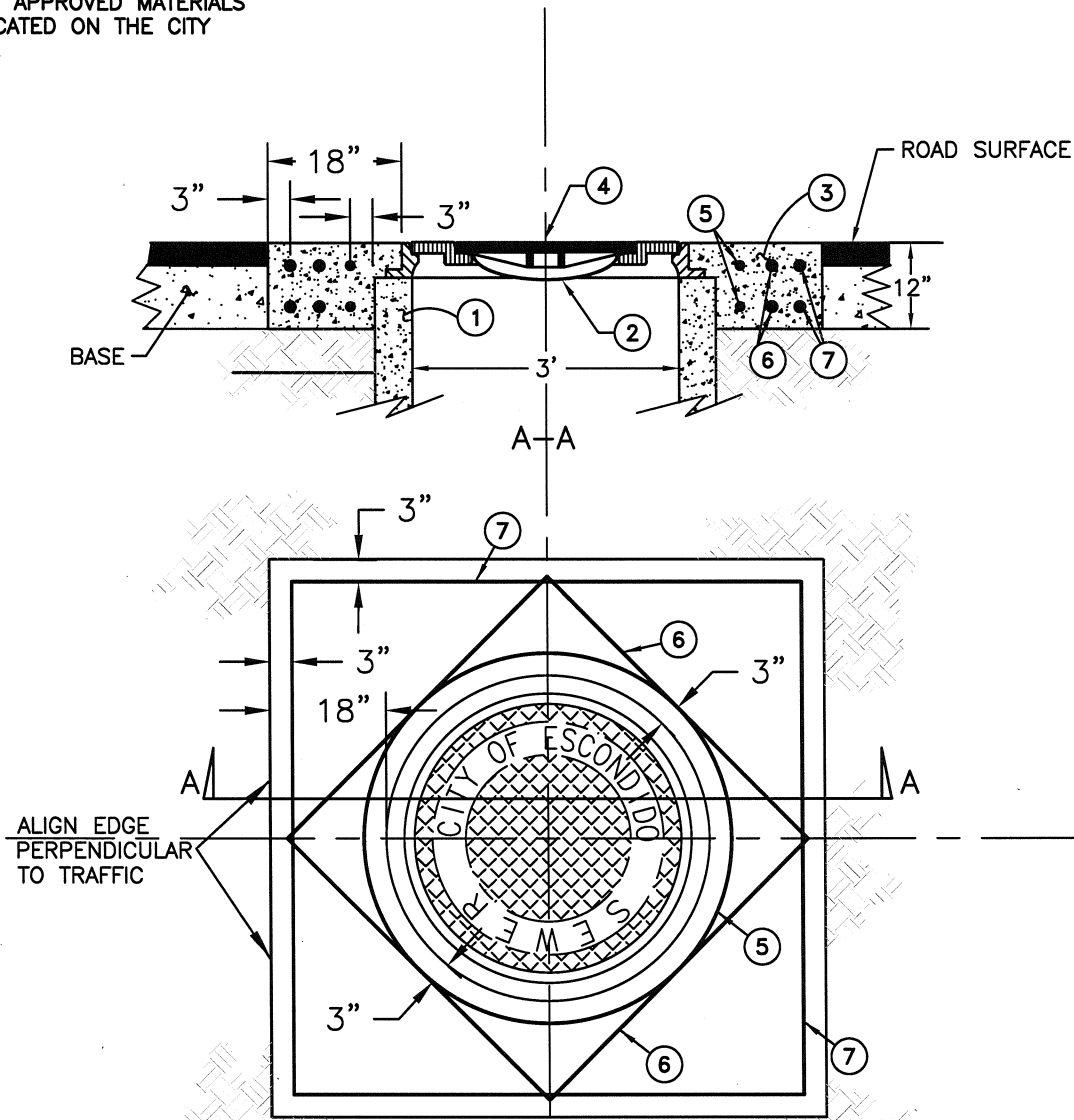
REVISED	APPROVED

DROP MANHOLE

STANDARD DRAWING NO.
S-3-E

NOTES:

FOR COMPONENT DETAILS REFER TO THE CITY OF ESCONDIDO UTILITIES APPROVED MATERIALS LIST LOCATED ON THE CITY WEBSITE.



- ① PRECAST GRADE RING 3'x18" MAXIMUM, ASTM C-478.
- ② 24" DIAMETER INFLOW PROTECTOR COVER - FRW OR EQUAL.
- ③ CONCRETE COLLAR MIN. 12" THK W/INTEGRAL COLOR (BLACK) PER SPECS.
- ④ CAST IRON MANHOLE FRAME & COVER. SEE SDRSD M-3. CAULK SPACE BETWEEN FRAME & OUTER COVER PIECE FOR WATER TIGHT SEAL.
- ⑤ 2 #4 FULL CIRCLE HOOPS, T & B MIN. 20" SPLICE
- ⑥ #6 DIAGONAL REINFORCEMENT, T & B
- ⑦ #6 CORNER REINFORCEMENT, "FULL SQUARE" T & B, 30" MINIMUM SPLICE

LEGEND ON PLANS

APPROVED: DATE: 4-2-2014
 UTILITY ENGINEER

CITY OF ESCONDIDO
 UTILITY DEPARTMENT

SCALE:
 NOT TO SCALE

REVISED	APPROVED

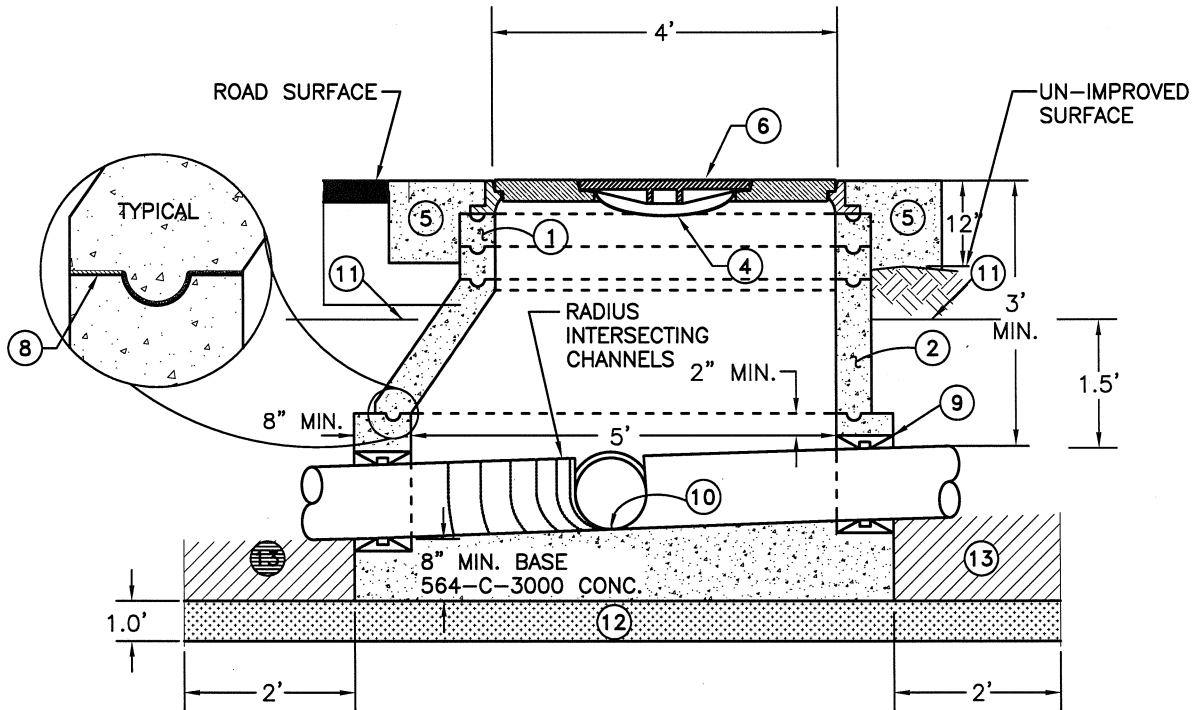
SEWER MANHOLE REINFORCEMENT

STANDARD DRAWING NO.
S-4-E

NOTES:

ALL EXPOSED SURFACES ON INSIDE OF MANHOLE TO BE COATED WITH RAVEN 405 EPOXY OR APPROVED EQUIVALENT.

FOR COMPONENT DETAILS REFER TO THE CITY OF ESCONDIDO UTILITIES APPROVED MATERIALS LIST LOCATED ON THE CITY WEBSITE.



- ① PRECAST GRADE RINGS 12" MAXIMUM HEIGHT, ASTM C-478.
- ② 60" x 48" PRECAST CONE PER ASTM C-478. VERTICAL SIDE SHALL BE ON THE UPSTREAM SIDE.
- ③ PRECAST MANHOLE SECTION PER ASTM C-478
- ④ 24" DIAMETER INFLOW PROTECTOR COVER - FRW OR EQUAL.
- ⑤ REINFORCED CONCRETE COLLAR PER S-4-E
- ⑥ CAST IRON MANHOLE FRAME & COVER. SEE SDRSD M-3. CAULK SPACE BETWEEN FRAME & OUTER COVER PIECE FOR WATER TIGHT SEAL.
- ⑦ NOT USED
- ⑧ ROPE MYSTIK SEALANT. USE KWIKSET BRAND "KWIKSEAL" 3/4" OR EQUIVALENT.
- ⑨ MANHOLE ADAPTER PER SPECIFICATIONS.
- ⑩ CHANNEL DEPTH = I.D. OF PIPE. CHANNELS TO BE "U" SHAPED. ALL CHANNEL BOTTOMS TO HAVE RADIUS OF PIPE.
- ⑪ 6" STRIP OF GREEN NONMETALLIC DETECTION TAPE.
- ⑫ 3/4" GRADED CRUSHED ROCK BEDDING. 12" MIN. THICKNESS EXTENDED 2' BEYOND CONC. MANHOLE BASE.
- ⑬ PIPE BEDDING AND SHADING PER SPECIFICATIONS.

LEGEND ON PLANS — 

APPROVED: _____ DATE: 4-2-2014

UTILITY ENGINEER

REVISED

APPROVED

CITY OF ESCONDIDO
 UTILITY DEPARTMENT

**SHALLOW
 SEWER MANHOLE**

SCALE:
 NOT TO SCALE

STANDARD DRAWING NO.
S-5-E