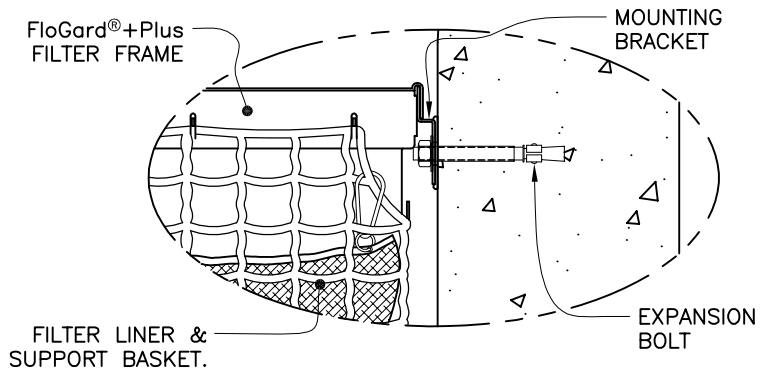


**SPECIFIER CHART**

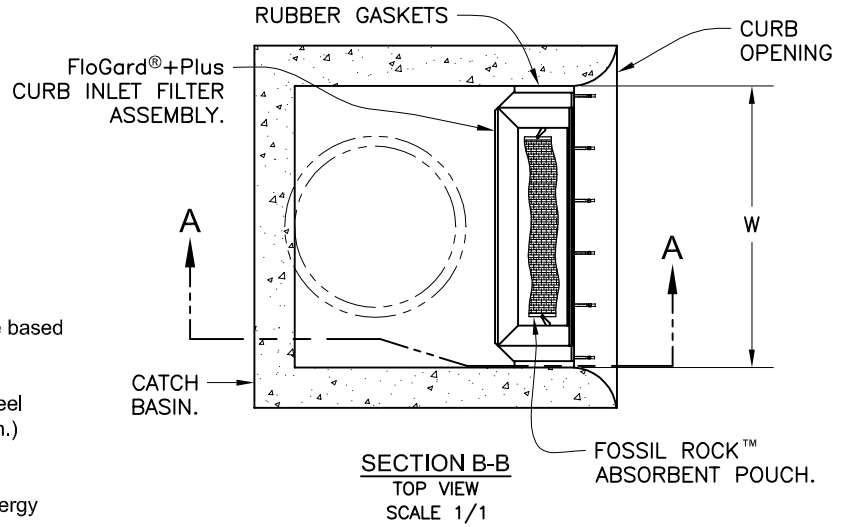
MODEL NO.	Curb Opening Width - W -	Storage Capacity - Cu. Ft. -	Filtered Flow Rate - GPM/CFS -	Bypass Flow Rate - GPM/CFS -
FGP-24CI	2.0' (24")	.95	338 / .75	2,513 / 5.6
FGP-30CI	2.5' (30")	1.20	450 / 1.00	3,008 / 6.7
FGP-36CI	3.0' (36")	1.50	563 / 1.25	3,547 / 7.9
FGP-42CI	3.5' (42")	1.80	675 / 1.50	3,951 / 8.8
FGP-48CI	4.0' (48")	2.10	768 / 1.76	4,445 / 9.9
FGP-5.0CI	5.0' (60")	2.40	900 / 2.00	5,208 / 11.6
FGP-6.0CI	6.0' (72")	3.05	1,126 / 2.51	6,196 / 13.8
FGP-7.0CI	7.0' (84")	3.65	1,350 / 3.01	7,139 / 15.9
FGP-8.0CI	8.0' (96")	4.25	1,576 / 3.51	8,082 / 18.0
FGP-10.0CI	10.0' (120")	4.85	1,800 / 4.01	9,833 / 21.9
FGP-12.0CI	12.0' (144")	6.10	2,252 / 5.02	11,764 / 26.2
FGP-14.0CI	14.0' (168")	7.30	2,700 / 6.02	13,515 / 30.1
FGP-16.0CI	16.0' (192")	8.55	3,152 / 7.02	15,446 / 34.4
FGP-18.0CI	18.0' (216")	9.45	3,490 / 7.78	17,152 / 38.2
FGP-21.0CI	21.0' (252")	10.95	4,050 / 9.02	19,891 / 44.3
FGP-28.0CI	28.0' (336")	14.60	5,400 / 12.03	26,311 / 58.6

**NOTES:**

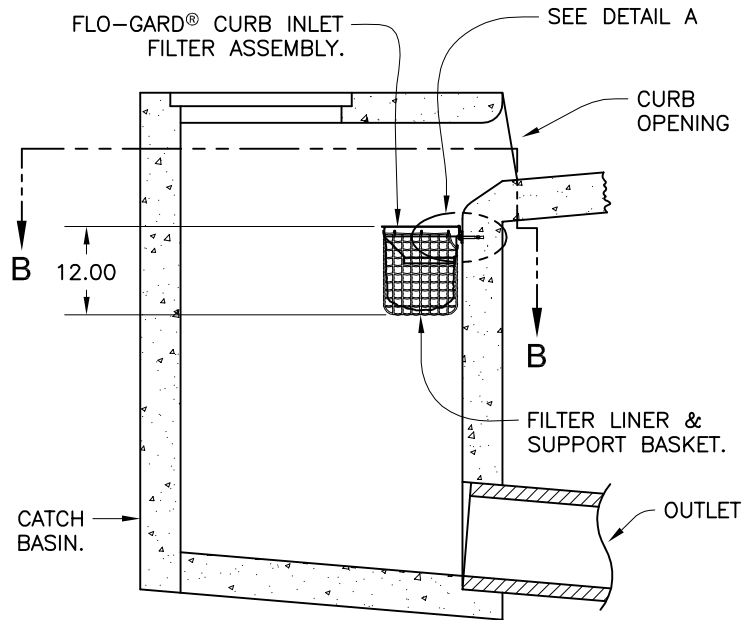
1. FloGard®+PLUS filter inserts shall be installed across the entire width of curb opening. Storage capacity and clean flow rates are based on full width installation.
2. Filter insert shall be attached to the catch basin with stainless steel expansion anchor bolts & washers (3/8" x 2-1/2" minimum length.) See detail A.
3. FloGard®+PLUS filter inserts are designed with a debris trap/energy dissipator for the retention of floatables and collected sediments .
4. Filter support frame shall be constructed from stainless steel Type 304.
5. Filter liner shall be constructed from durable polypropylene, woven, monofilament, geotextile. Filter liner shall not allow the retention of water between storm events.
6. Filter inserts are supplied with "clip-in" filter pouches utilizing FOSSIL ROCK™ filter medium for the collection and retention of petroleum hydrocarbons (oils & greases).
7. FloGard®+PLUS filter inserts and FOSSIL ROCK™ filter medium pouches must be maintained in accordance with manufacturer recommendations.
8. FloGard +PLUS filter inserts are available in standard lengths of 24", 30", 35", 42" & 48" and may be installed in various length combinations (end to end) to fit length of noted catch basin.
9. Clean flow rates are "calculated" based on liner flow rate of 140 gallons per minute per square foot of material, a factor of .50 has been applied to allow for anticipated sediment & debris loading. An additional safety factor of between .25 & .50 may be applied to allow for site specific sediment loading.
10. Storage capacity reflects maximum solids collection prior to impending "initial" filtering bypass. The "ultimate" high-flow bypass will not become impeded due to maximum solids loading.



**DETAIL A**  
MOUNTING BRACKET & EXPANSION BOLTS  
SEE NOTE 2  
SCALE 6/1



**SECTION B-B**  
TOP VIEW  
SCALE 1/1



**SECTION A-A**  
SIDE VIEW  
SCALE 1/1



TITLE

**FloGard® +PLUS**  
CATCH BASIN FILTER INSERT  
(Curb Inlet Style)



**KriStar Enterprises, Inc.**

360 Sutton Place, Santa Rosa, CA 95407  
Ph: 800.579.8819, Fax: 707.524.8186, www.krstar.com

DRAWING NO. FGP-0002	REV D	ECO 0059 JPR 12/30/08	DATE JPR 11/3/06	SHEET 1 OF 1
-------------------------	----------	--------------------------	---------------------	--------------