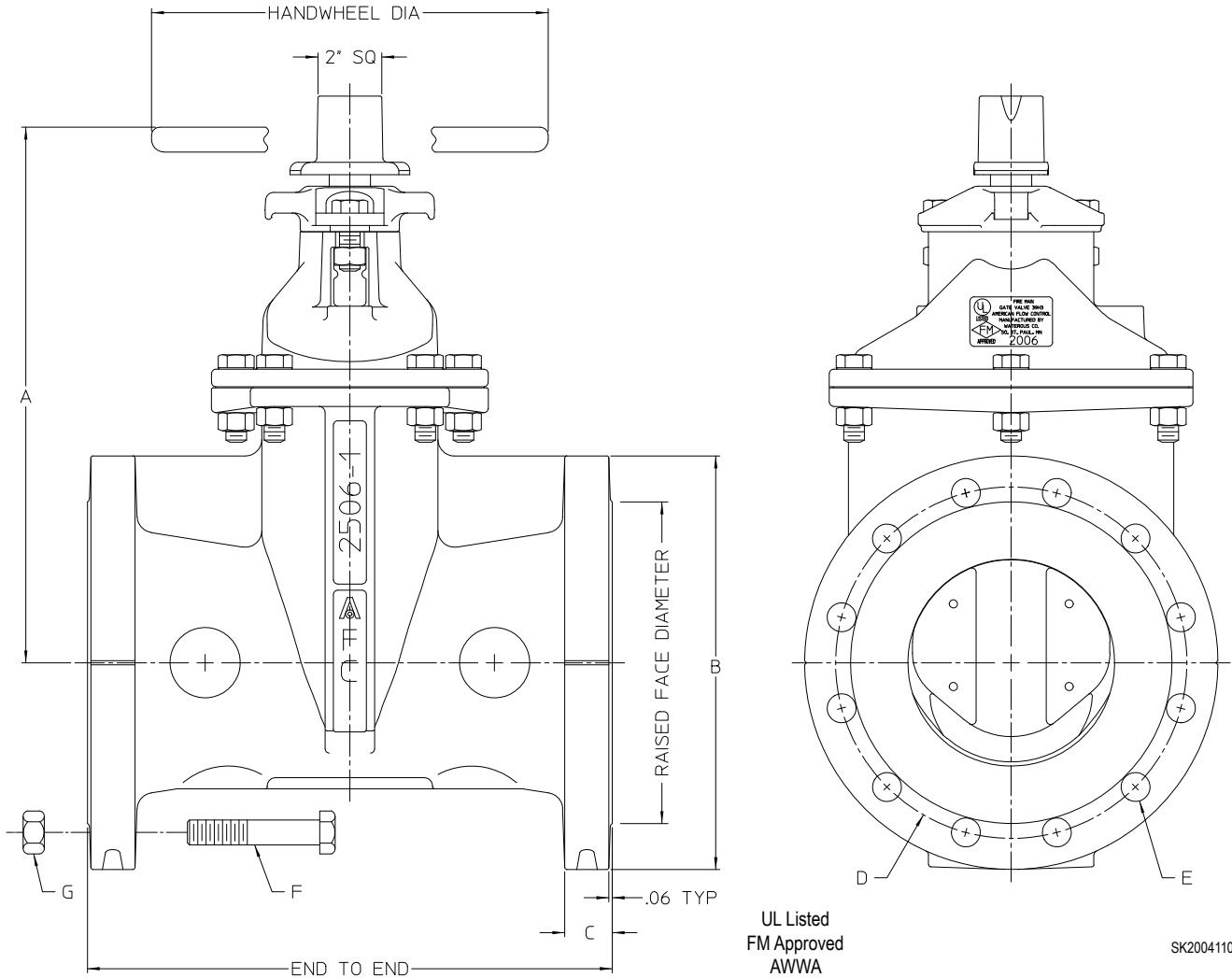


AMERICAN Flow Control Submittal Information

4" - 12" SERIES 2500-1 RESILIENT WEDGE GATE VALVE, NRS, CLASS 250 RAISED FACE FLANGES

PRODUCTION SEAT TESTED TO 375 PSIG



UL Listed
FM Approved
AWWA

SK20041104

VALVE SIZE	END TO END	NO. OF TURNS TO OPEN	HAND-WHEEL DIA	A	B	C	D	E		F	G	RAISED FACE DIA
					DIA OF FLANGE	FLANGE THICKNESS	BOLT CIRCLE DIA	NO.	SIZE	BOLT SIZE (SEE NOTES 2 & 3)		
4"	12.00	14	10.00	13.91	10.00	1.25	7.88	8	.88	3/4-10 x 4.00	8	6.94
6"	15.88	20	12.00	17.12	12.50	1.44	10.62	12	.88	3/4-10 x 4.00	12	9.69
8"	16.50	26	14.00	20.47	15.00	1.62	13.00	12	1.00	7/8-9 x 4.50	12	11.94
10"	18.00	32	15.50	24.06	17.50	1.88	15.25	16	1.12	1"-8 x 5.50	16	14.06
12"	19.75	38	15.50	27.59	20.50	2.00	17.75	16	1.25	1-1/8-7 x 5.50	16	16.44

NOTES:

1. Flange dimensions are in accordance with ASME B16.1, Class 250 for cast iron flanges.
2. End-to-end lengths are in accordance with ASME B16.10.
3. Bolt lengths shown are for standard cast iron flange thicknesses with through holes. Steel or ductile iron flanges with reduced thickness or valves or fittings with tapped holes may require shorter bolts.
4. Bolts shown are for reference only and are not furnished with valve.



AMERICAN
FLOW CONTROL

THE RIGHT WAY

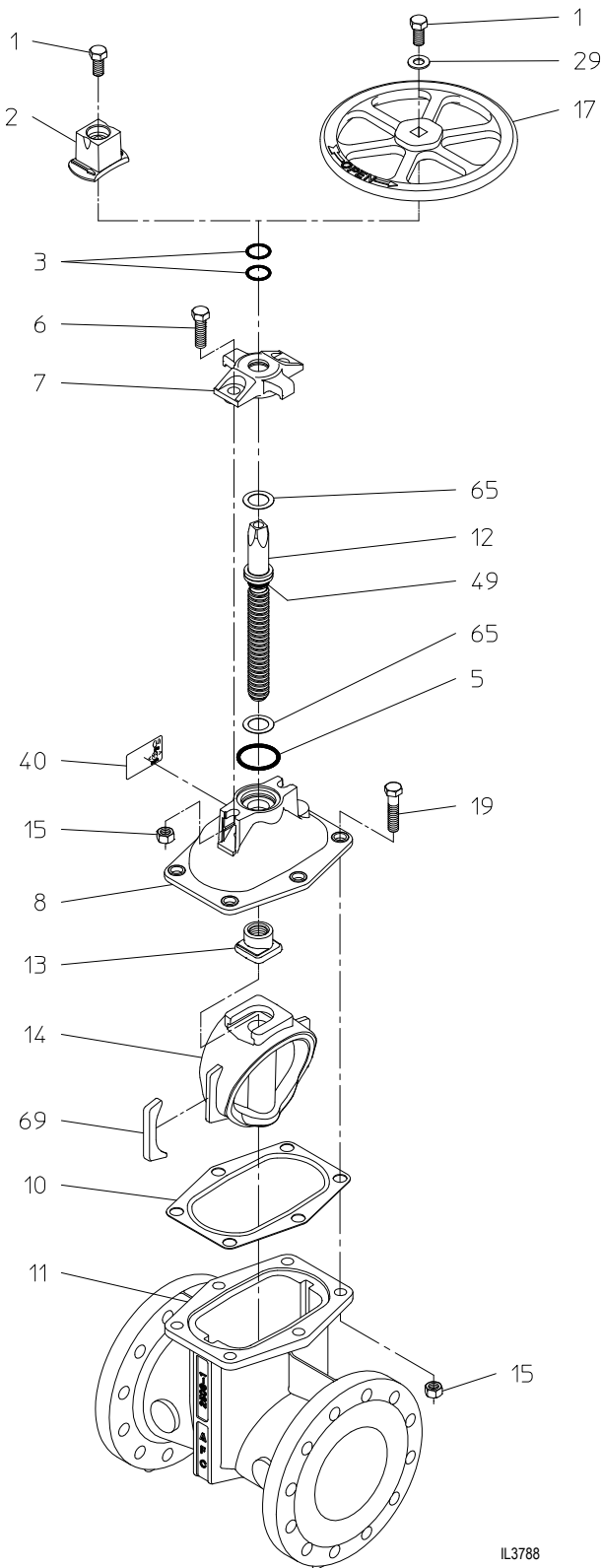
AMERICAN Flow Control
P.O. Box 2727
Birmingham, Al. 35202-2727
Phone: 1-800-326-8051
Fax: 1-800-610-3569
E-mail: afcsales@american-usa.com

Waterous Company
125 Hardman Avenue South
South St. Paul, Mn. 55075-1191
Phone: 1-888-266-3686
Fax: 1-800-601-2809
E-mail: afcsales@american-usa.com

WWW.AMERICAN-USA.COM

STANDARD 2" OPERATING NUT

OPTIONAL HANDWHEEL



IL3788

Construction shown is typical of the 6-inch size and is illustrative only. Construction of other sizes vary slightly.

REF NO.	DESCRIPTION	MATERIAL
1	Hex Head Bolt, 5/8-11 x 1"	304 Stainless Steel
2	Operating Nut, 2" Square	Ductile Iron, ASTM A536
3	O-Ring	Rubber
5	Stuffing Box Gasket	Rubber O-ring
6	Hex Head Bolt, 5/8-11 x 1-3/4"	304 Stainless Steel
7	Stuffing Box	Ductile Iron, ASTM A536
8	Bonnet	Ductile Iron, ASTM A536
10	Bonnet Gasket	Rubber
11	Body	Ductile Iron, ASTM A536
12	Stem	Manganese Bronze, ASTM B763, UNS C86700
13	Wedge Nut	Manganese Bronze, ASTM B763, UNS C86700
14	Resilient Wedge	EPDM Rubber Encapsulated Ductile Iron, ASTM A536
15	Hex Nut, 5/8-11	304 Stainless Steel
17	Handwheel	Ductile Iron, ASTM A536
19	Hex Head Bolt, 5/8-11 x 2-1/4"	304 Stainless Steel
29	Flat Washer, 5/8	304 Stainless Steel
40	UL/FM Label	Pressure Sensitive Acrylic Film
49	O-Ring	Rubber
65	Thrust Washer	304 Stainless Steel
69	Wedge Cover	Acetal Polymer

OPTIONAL MATERIALS ARE AS FOLLOWS

BOLTS and NUTS: 316 Stainless Steel

STEM: Cast NDZ-S Bronze, ASTM B763, UNS C99500

STEM: Stainless Steel

WEDGE NUT: Silicon Bronze, ASTM B584, UNS C87600

Open Direction: Left (C.C.W.) Right (C.W.)

NOTES:

1. Available in configurations that are UL Listed and FM Approved with 250 psig rated working pressure.
2. Meets requirements of ANSI/AWWA C515 with 250 psig rated working pressure.
3. Production hydrostatic pressure testing of every valve is conducted in accordance with UL, FM, and AWWA standards for 250-psig rated working pressure and includes shell testing at 500-psig and seat tests in both directions at 375-psig.
4. Fusion-bonded epoxy-coated in accordance with ANSI/AWWA C550.
5. Certified to ANSI/NSF 61 and 372.



AMERICAN
FLOW CONTROL

THE RIGHT WAY

AMERICAN Flow Control
P.O. Box 2727
Birmingham, Al. 35202-2727
Phone: 1-800-326-8051
Fax: 1-800-610-3569
E-mail: afcsales@american-usa.com

Waterous Company
125 Hardman Avenue South
South St. Paul, Mn. 55075-1191
Phone: 1-888-266-3686
Fax: 1-800-601-2809
E-mail: afcsales@american-usa.com

WWW.AMERICAN-USA.COM