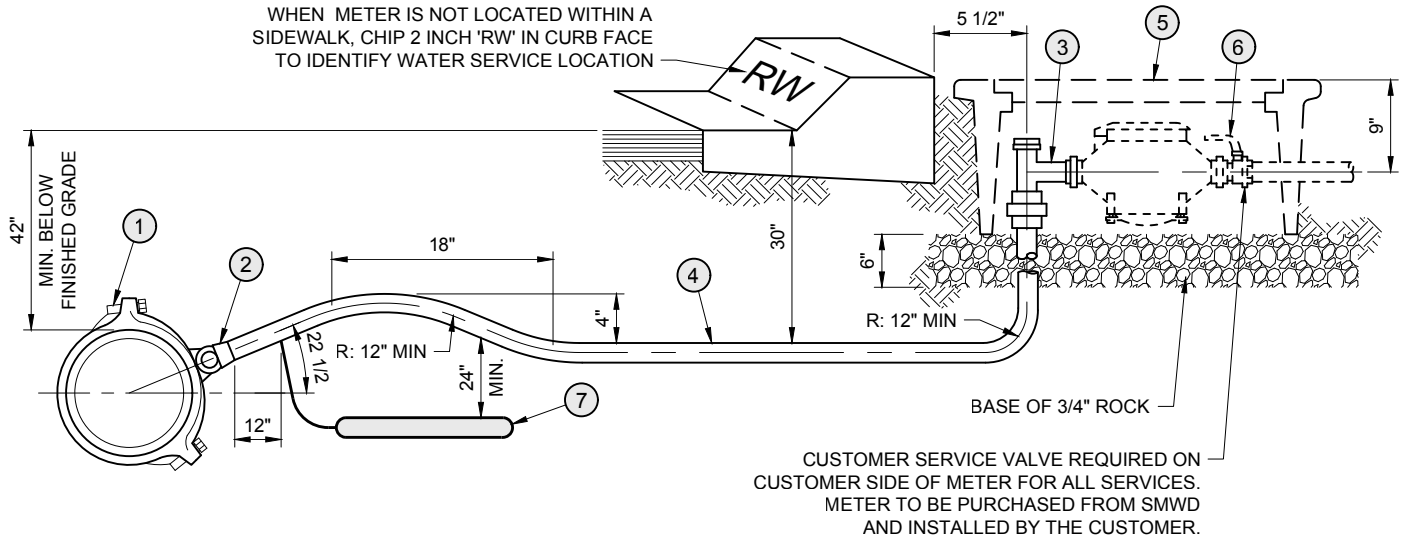


WHEN METER IS NOT LOCATED WITHIN A SIDEWALK, CHIP 2 INCH 'RW' IN CURB FACE TO IDENTIFY WATER SERVICE LOCATION



CUSTOMER SERVICE VALVE REQUIRED ON CUSTOMER SIDE OF METER FOR ALL SERVICES. METER TO BE PURCHASED FROM SMWD AND INSTALLED BY THE CUSTOMER.

NOTES

1. DOUBLE STRAP SERVICE SADDLE REQUIRED FOR ALL MAINS, EXCEPT PVC UNDER 12" DIAMETER.
2. INSTALL CORPORATION STOP TAP WITH KEY SIDEWAYS, IN OPEN POSITION.
3. THE CORPORATION STOP TAP WILL BE SPECIFIED BY THE PIPE MANUFACTURER, ALL DRY TAPS WILL BE MADE USING MACHINE WITH GUIDE OR PILOT TAP.
4. THE WATER SERVICE SHALL EXTEND PERPENDICULAR TO THE CENTERLINE OF THE STREET FROM THE WATER MAIN TO THE METER STOP EXCEPT IN CUL-DE-SAC ENDS, WHERE NON-PERPENDICULAR INSTALLATION IS ALLOWED.
5. NO TAP TO MAIN SHALL BE WITHIN 12" OF A COUPLING OR WITHIN 18" OF ANOTHER TAP.
6. METER BOXES SHALL BE INSTALLED DIRECTLY BEHIND CURB WHETHER SIDEWALK IS ADJACENT TO CURB OR NOT. ANGLE METER STOP SHALL BE POSITIONED TO ALLOW FULL OPERATION OF BOTH VALVES.
7. NO SPLICES WILL BE PERMITTED BETWEEN CORPORATION STOP AND ANGLE METER STOP EXCEPT WHEN SERVICE RUN EXCEEDS 60 FEET, IN WHICH CASE A SILVER SOLDER COUPLING SHALL BE USED.
8. ALL LIDS AND COVERS SHALL BE RATED FOR H20 TRAFFIC LOADING. ARMORCAST A6000H9-PLUG SHALL BE INSTALLED WITH MANUAL READ METERS. J&R CONCRETE W4 1/2 CONCRETE BOX & P-W4 1/2 20K
9. FOR METERS IN SLOPES, SEE STANDARD DRAWING W28.
10. WRAP SERVICE LINE FROM MAINLINE TO ANGLE STOP WITH PURPLE IDENTIFICATION TAPE.
11. ANODE LEAD WIRE SHALL BE CLAMPED TO COPPER TUBING. CLAMP SHALL BE DIRECT BURIAL TYPE OF RED BRASS WITH BRASS SCREWS.
12. COPPER TUBING SHALL BE DOUBLE POLYETHYLENE ENCASED WITH 8 MIL. MINIMUM THICKNESS, AND ALL OPENINGS IN THE SLEEVES SHALL BE TAPED SHUT WITH POLYKEN # 900 TAPE WRAP, OR APPROVED EQUAL. TAPE SHALL BE APPLIED IN STRICT CONFORMANCE WITH MANUFACTURER'S RECOMMENDATIONS.
13. INSTALL SACRIFICIAL ANODE CONSISTING OF 15 LB. HIGH PURITY ZINC BAR BAGGED IN A BACKFILL OF CALCIUM, BENTONITE AND GYPSUM, WITH NO.12 SOLID COPPER LEAD WIRE. BURY ANODE IN SERVICE LINE TRENCH. SATURATE ANODE WITH WATER PRIOR TO BACKFILLING TRENCH. TEST ANODE PER THE MANUFACTURER RECOMMENDATIONS FOR CONFIRMATION OF PROPER INSTALLATION AND SUBMIT THE RESULTS TO DISTRICT INSPECTOR FOR REVIEW.
14. ALL DUCTILE IRON FITTINGS AND BENDS SHALL BE DOUBLE POLYETHYLENE ENCASED PER AWWA STANDARD C-105.

CONSTRUCTION ITEMS / MATERIALS LIST

ITEM	SIZE AND DESCRIPTION	MANUFACTURER	MFR. CAT. NO. OR SPEC.
①	SERVICE SADDLE WITH IP THR'D	FORD MUELLER	202BS BR2S
②	1" BRONZE CORPORATION STOP	FORD MUELLER	FB700-4-NL B-25025N
③	1" x 3/4" BRONZE ANGLE METER STOP WITH LOCKWING	MUELLER	B24255-N

CONSTRUCTION ITEMS / MATERIALS LIST (Cont.)

ITEM	SIZE AND DESCRIPTION	MANUFACTURER	MFR. CAT. NO. OR SPEC.
④	1" COPPER TUBING WITH FLARED ENDS AND POLYETHYLENE SLEEVE	SEE NOTE 12	TYPE "K" SOFT
⑤	PURPLE METER BOX (WITH READING LID)	J&R CONCRETE PRODUCTS OR ARMORCAST	SEE NOTE 8
⑥	CUSTOMER BALL VALVE	MUELLER	B-24351N
⑦	15 LB ZINC ANODE		

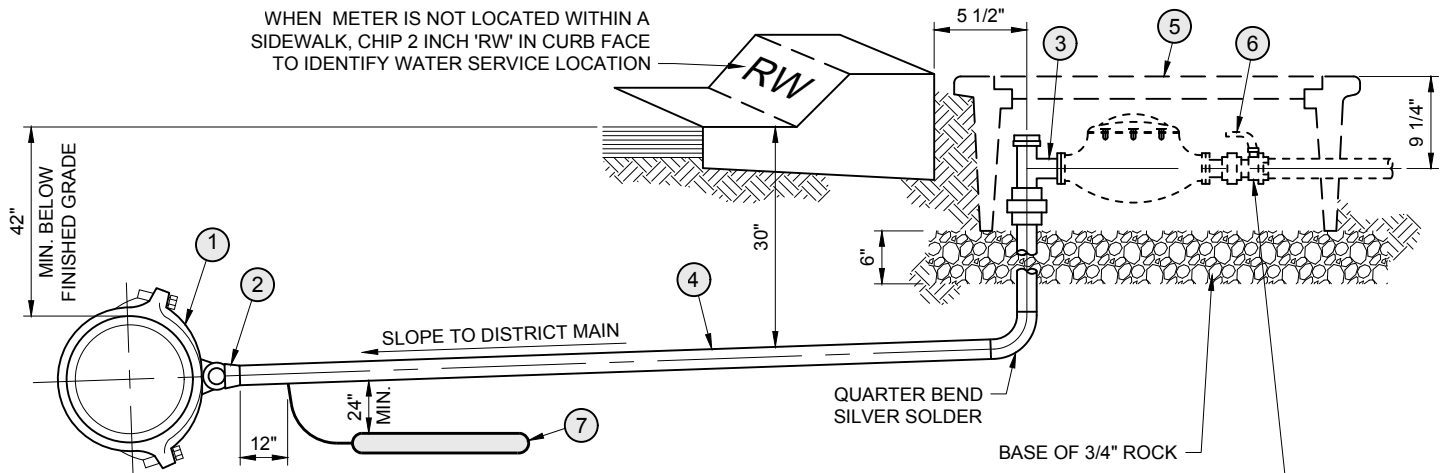
Santa Margarita Water District

REVISION	DECEMBER 2021	
Date	Aprvd	APPROVED:
03/22	PAB	<i>Patricia Butler</i> 6/24
11/23	PAB	PATRICIA A. BUTLER RCE C57880 DATE
		CHIEF ENGINEER, Engineering Department

**1 INCH
RECYCLED WATER SERVICE**

**SMWD
STD DWG NO.
RW1
1 OF 1**

WHEN METER IS NOT LOCATED WITHIN A SIDEWALK, CHIP 2 INCH 'RW' IN CURB FACE TO IDENTIFY WATER SERVICE LOCATION



CUSTOMER SERVICE VALVE REQUIRED ON CUSTOMER SIDE OF METER FOR ALL SERVICES. METER TO BE PURCHASED FROM SMWD AND INSTALLED BY THE CUSTOMER.

NOTES

1. DOUBLE STRAP SERVICE SADDLE REQUIRED FOR ALL MAINS.
2. INSTALL CORPORATION STOP TAP WITH KEY SIDEWAYS, IN OPEN POSITION.
3. THE CORPORATION STOP TAP WILL BE SPECIFIED BY THE PIPE MANUFACTURER, ALL DRY TAPS WILL BE MADE USING MACHINE WITH GUIDE OR PILOT TAP.
4. THE WATER SERVICE SHALL EXTEND PERPENDICULAR TO THE CENTERLINE OF THE STREET FROM THE WATER MAIN TO THE METER STOP EXCEPT IN CUL-DE-SAC ENDS, WHERE NON-PERPENDICULAR INSTALLATION IS ALLOWED.
5. NO TAP TO MAIN SHALL BE WITHIN 12" OF A COUPLING OR WITHIN 24" OF ANOTHER TAP.
6. METER BOXES SHALL BE INSTALLED DIRECTLY BEHIND CURB WHETHER SIDEWALK IS ADJACENT TO CURB OR NOT. ANGLE METER STOP SHALL BE POSITIONED TO ALLOW FULL OPERATION OF BOTH VALVES.
7. NO SPLICES WILL BE PERMITTED BETWEEN CORPORATION STOP AND ANGLE METER STOP EXCEPT WHEN SERVICE RUN EXCEEDS 60 FEET, SILVER SOLDER COUPLING SHALL BE USED FOR SPLICES.
8. ALL LIDS AND COVERS SHALL BE RATED FOR H20 TRAFFIC LOADING. ARMORCAST A6000H9-PLUG SHALL BE INSTALLED WITH MANUAL READ METERS. J&R CONCRETE W6B SERIES CONCRETE BOX & P-W6B H20 2 PIECE POLYMER CONCRETE COVER WITH QUICK READ PORT & POLYMER READING LID (PURPLE), OR ARMORCAST A6001640PCX12-PUR POLYMER CONCRETE BOX PURPLE COLOR, A6001947TDZ-H9-PUR 20K POLYMER CONCRETE COVER WITH CAVITY PURPLE COLOR, A6000482T-PUR 20K POLYMER CONCRETE COVER INSERT PURPLE COLOR.
9. FOR METERS IN SLOPES, SEE STANDARD DRAWING W28.
10. WRAP SERVICE LINE FROM MAINLINE TO ANGLE STOP WITH PURPLE IDENTIFICATION TAPE.
11. ANODE LEAD WIRE SHALL BE CLAMPED TO COPPER TUBING. CLAMP SHALL BE DIRECT BURIAL TYPE OF RED BRASS WITH BRASS SCREWS.
12. COPPER TUBING SHALL BE DOUBLE POLYETHYLENE ENCASED WITH 8 MIL. MINIMUM THICKNESS, AND ALL OPENINGS IN THE SLEEVES SHALL BE TAPED SHUT WITH POLYKEN # 900 TAPE WRAP, OR APPROVED EQUAL. TAPE SHALL BE APPLIED IN STRICT CONFORMANCE WITH MANUFACTURER'S RECOMMENDATIONS.
13. INSTALL SACRIFICIAL ANODE CONSISTING OF 15 LB. HIGH PURITY ZINC BAR BAGGED IN A BACKFILL OF CALCIUM, BENTONITE AND GYPSUM, WITH NO.12 SOLID COPPER LEAD WIRE. BURY ANODE IN SERVICE LINE TRENCH. SATURATE ANODE WITH WATER PRIOR TO BACKFILLING TRENCH. TEST ANODE PER THE MANUFACTURER RECOMMENDATIONS FOR CONFIRMATION OF PROPER INSTALLATION AND SUBMIT THE RESULTS TO DISTRICT INSPECTOR FOR REVIEW.
14. ALL DUCTILE IRON FITTINGS AND BENDS SHALL BE DOUBLE POLYETHYLENE ENCASED PER AWWA STANDARD C-105.

CONSTRUCTION ITEMS / MATERIALS LIST			
ITEM	SIZE AND DESCRIPTION	MANUFACTURER	MFR. CAT. NO. OR SPEC.
①	SERVICE SADDLE WITH IP THR'D	FORD MUELLER	202BS BR2S
②	1 1/2" BRONZE CORPORATION STOP	FORD MUELLER	FB700-6-NL B-25025N
③	1 1/2" BRONZE ANGLE METER STOP WITH LOCKWING	MUELLER	B-24277N

CONSTRUCTION ITEMS / MATERIALS LIST (Cont.)			
ITEM	SIZE AND DESCRIPTION	MANUFACTURER	MFR. CAT. NO. OR SPEC.
④	1 1/2" COPPER TUBING WITH FLARED ENDS AND POLYETHYLENE SLEEVE	SEE NOTE 12	TYPE "K" SOFT
⑤	METER BOX (WITH READING LID)	J&R CONCRETE PRODUCTS OR ARMORCAST	SEE NOTE 8
⑥	CUSTOMER BALL VALVE	MUELLER	B-24337N
⑦	15 LB ZINC ANODE		

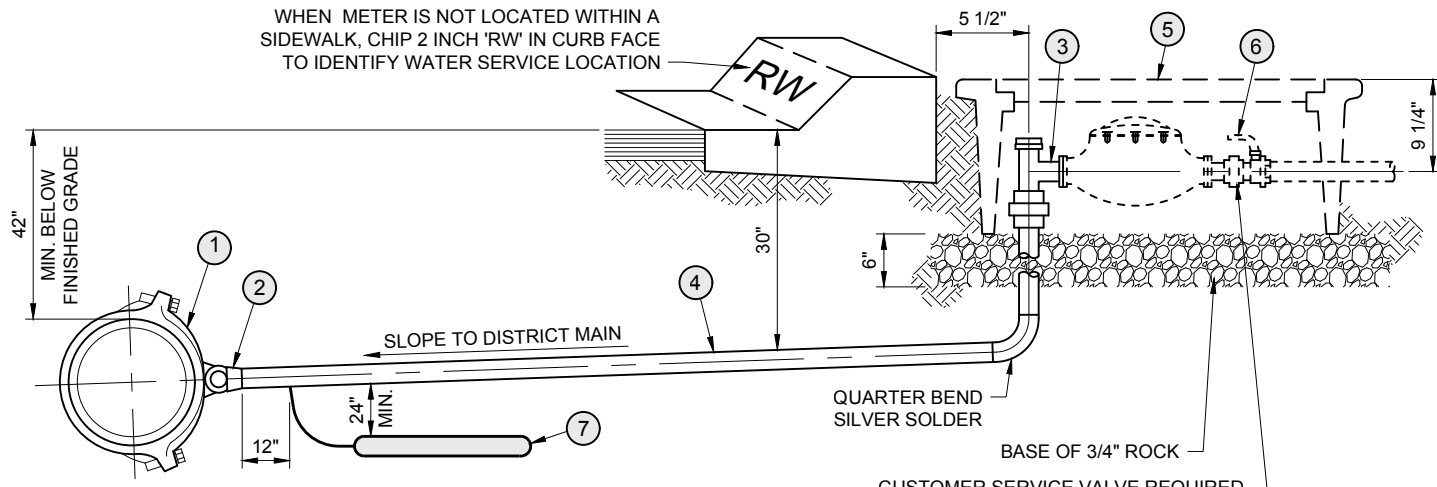
Santa Margarita Water District

REVISION		DECEMBER 2021	
Date	Aprvd	APPROVED:	
03/22	PAB		
11/23	PAB		
		PATRICIA A. BUTLER	RCE C57880 DATE 6/24
		CHIEF ENGINEER, Engineering Department	

1-1/2 INCH RECYCLED WATER SERVICE

SMWD
STD DWG NO.
RW2
1 OF 1

WHEN METER IS NOT LOCATED WITHIN A SIDEWALK, CHIP 2 INCH 'RW' IN CURB FACE TO IDENTIFY WATER SERVICE LOCATION



CUSTOMER SERVICE VALVE REQUIRED ON CUSTOMER SIDE OF METER FOR ALL SERVICES. METER TO BE PURCHASED FROM SMWD AND INSTALLED BY THE CUSTOMER.

NOTES

1. DOUBLE STRAP SERVICE SADDLE REQUIRED FOR ALL MAINS. EXCEPT PVC UNDER 12" DIAMETER
2. INSTALL CORPORATION STOP TAP WITH KEY SIDEWAYS, IN OPEN POSITION.
3. THE CORPORATION STOP TAP WILL BE SPECIFIED BY THE PIPE MANUFACTURER, ALL DRY TAPS WILL BE MADE USING MACHINE WITH GUIDE OR PILOT TAP.
4. THE WATER SERVICE SHALL EXTEND PERPENDICULAR TO THE CENTERLINE OF THE STREET FROM THE WATER MAIN TO THE METER STOP EXCEPT IN CUL-DE-SAC ENDS, WHERE NON-PERPENDICULAR INSTALLATION IS ALLOWED.
5. NO TAP TO MAIN SHALL BE WITHIN 12" OF A COUPLING OR WITHIN 18" OF ANOTHER TAP.
6. METER BOXES SHALL BE INSTALLED DIRECTLY BEHIND CURB WHETHER SIDEWALK IS ADJACENT TO CURB OR NOT. ANGLE METER STOP SHALL BE POSITIONED TO ALLOW FULL OPERATION OF BOTH VALVES.
7. NO SPLICES WILL BE PERMITTED BETWEEN CORPORATION STOP AND ANGLE METER STOP EXCEPT WHEN SERVICE RUN EXCEEDS 60 FEET, SILVER SOLDER COUPLING SHALL BE USED FOR SPLICES.
8. ALL LIDS AND COVERS SHALL BE RATED FOR H20 TRAFFIC LOADING. ARMORCAST A6000H9-PLUG SHALL BE INSTALLED WITH MANUAL READ METERS. J&R CONCRETE W6B SERIES CONCRETE BOX & P-W6B H20 2 PIECE POLYMER CONCRETE COVER WITH QUICK READ PORT & POLYMER READING LID (PURPLE), OR ARMORCAST A6001640PCX12-PUR POLYMER CONCRETE BOX PURPLE COLOR, A6001947TDZ-H9-PUR 20K POLYMER CONCRETE COVER WITH CAVITY PURPLE COLOR, A6000482T-PUR 20K POLYMER CONCRETE COVER INSERT PURPLE COLOR.
9. FOR METERS IN SLOPES, SEE STANDARD DRAWING W28.
10. WRAP SERVICE LINE FROM MAINLINE TO ANGLE STOP WITH PURPLE IDENTIFICATION TAPE.
11. ANODE LEAD WIRE SHALL BE CLAMPED TO COPPER TUBING. CLAMP SHALL BE DIRECT BURIAL TYPE OF RED BRASS WITH BRASS SCREWS.
12. COPPER TUBING SHALL BE DOUBLE POLYETHYLENE ENCASED WITH 8 MIL. MINIMUM THICKNESS, AND ALL OPENINGS IN THE SLEEVES SHALL BE TAPED SHUT WITH POLYKEN # 900 TAPE WRAP, OR APPROVED EQUAL. TAPE SHALL BE APPLIED IN STRICT CONFORMANCE WITH MANUFACTURER'S RECOMMENDATIONS.
13. INSTALL SACRIFICIAL ANODE CONSISTING OF 15 LB. HIGH PURITY ZINC BAR BAGGED IN A BACKFILL OF CALCIUM, BENTONITE AND GYPSUM, WITH NO. 12 SOLID COPPER LEAD WIRE. BURY ANODE IN SERVICE LINE TRENCH. SATURATE ANODE WITH WATER PRIOR TO BACKFILLING TRENCH. TEST ANODE PER THE MANUFACTURER RECOMMENDATIONS FOR CONFIRMATION OF PROPER INSTALLATION AND SUBMIT THE RESULTS TO DISTRICT INSPECTOR FOR REVIEW.
14. ALL DUCTILE IRON FITTINGS AND BENDS SHALL BE DOUBLE POLYETHYLENE ENCASED PER AWWA STANDARD C-105.

CONSTRUCTION ITEMS / MATERIALS LIST			
ITEM	SIZE AND DESCRIPTION	MANUFACTURER	MFR. CAT. NO. OR SPEC.
1	SERVICE SADDLE WITH IP THR'D	FORD MUELLER	202BS BR2S
2	2" BRONZE CORPORATION STOP	FORD MUELLER	FB700-7-NL B-25025N
3	2" BRONZE ANGLE METER STOP WITH LOCKWING	MUELLER	B24277N
4	2" COPPER TUBING WITH FLARED ENDS AND POLYETHYLENE SLEEVE	SEE NOTE 12	TYPE "K" SOFT

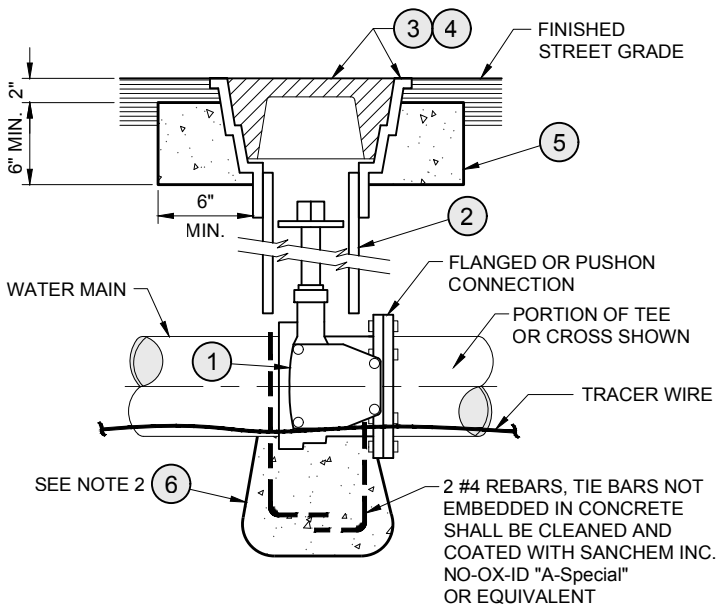
CONSTRUCTION ITEMS / MATERIALS LIST (Cont.)			
ITEM	SIZE AND DESCRIPTION	MANUFACTURER	MFR. CAT. NO. OR SPEC.
5	METER BOX (WITH READING LID)	J&R CONCRETE PRODUCTS OR ARMORCAST	SEE NOTE 8
6	CUSTOMER BALL VALVE BRASS NUTS AND BOLTS TEST TAP	MUELLER	B-24337-41-N 5/8" x 2-1/2" BRASS TEE W/ PLUG
7	15 LB ZINC ANODE		

Santa Margarita Water District

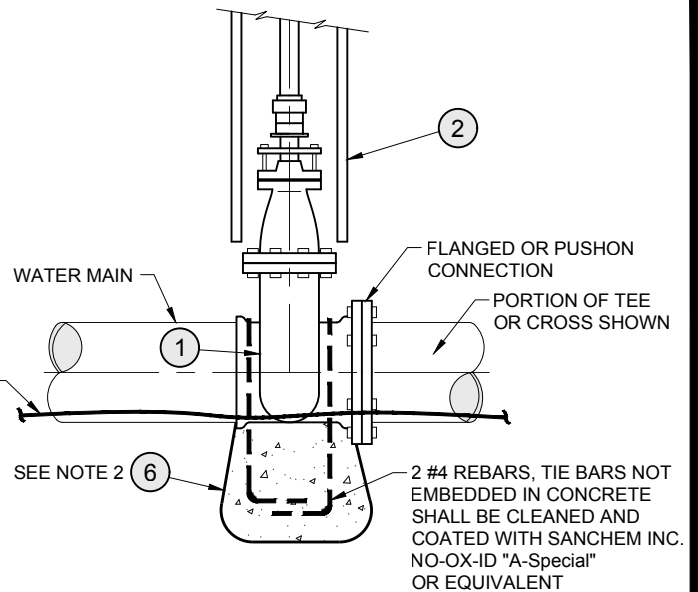
REVISION		DECEMBER 2021	
Date	Aprvd	APPROVED:	
03/22	PAB		
11/23	PAB		
		PATRICIA A. BUTLER	RCE C57880 DATE 6/24
		CHIEF ENGINEER, Engineering Department	

2 INCH
RECYCLED WATER SERVICE

SMWD
STD DWG NO.
RW2A
1 OF 1



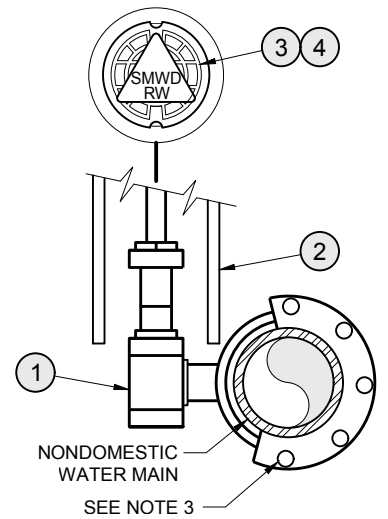
BUTTERFLY VALVE



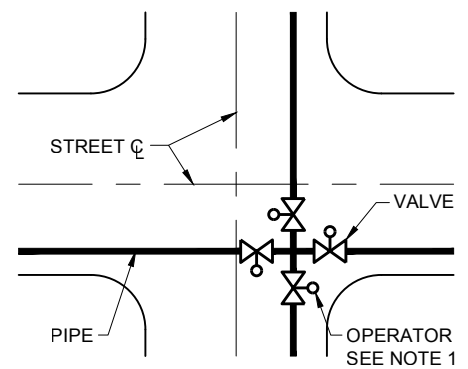
GATE VALVE

NOTES

1. BUTTERFLY VALVE OPERATORS SHALL BE LOCATED ON THE LEFT HAND SIDE OF THE VALVE WHEN STANDING ON THE FLANGED END OF THE VALVE (AT THE TEE OR CROSS) AND LOOKING THROUGH THE VALVE TOWARD THE PIPE END. AT STREET INTERSECTIONS WHERE VALVE BOX LOCATION MAY INTERFERE WITH PROPOSED CONCRETE CROSS GUTTER, PIPELINE SHALL BE MOVED AWAY FROM STANDARD LOCATION AS REQUIRED.
2. ANCHOR BLOCK REQUIRED ONLY WHEN VALVE IS NOT FLANGED TO TEE OR CROSS.
3. ALL BURIED BOLTS SHALL BE COATED WITH SANCHEM INC. NO-OX-ID "A-Special" OR APPROVED EQUAL.



CONSTRUCTION ITEMS / MATERIALS LIST			
ITEM	SIZE AND DESCRIPTION	MANUFACTURER	MANUFACTURER CATALOG NO. OR SPEC.
①	BUTTERFLY VALVE OR GATE VALVE	-----	SEE SPECIFICATIONS
②	5" PVC PIPE	-----	-----
③	VALVE BOX AND COVER WITH TRIANGLE AND SMWD RW CAST LID	SOUTH BAY FOUNDRY	SBF 1208N FLANGED BOTTOM FRAME, HIGH TRAFFIC / HEAVY DUTY WITH "SMWD RW" LID
⑤	CONCRETE RING, CLASS 560-C-3250	-----	PER OCPW STD PLAN 1509
⑥	ANCHOR BLOCK (SEE NOTE 2)	-----	PER STD DWG W12, CONDITION I



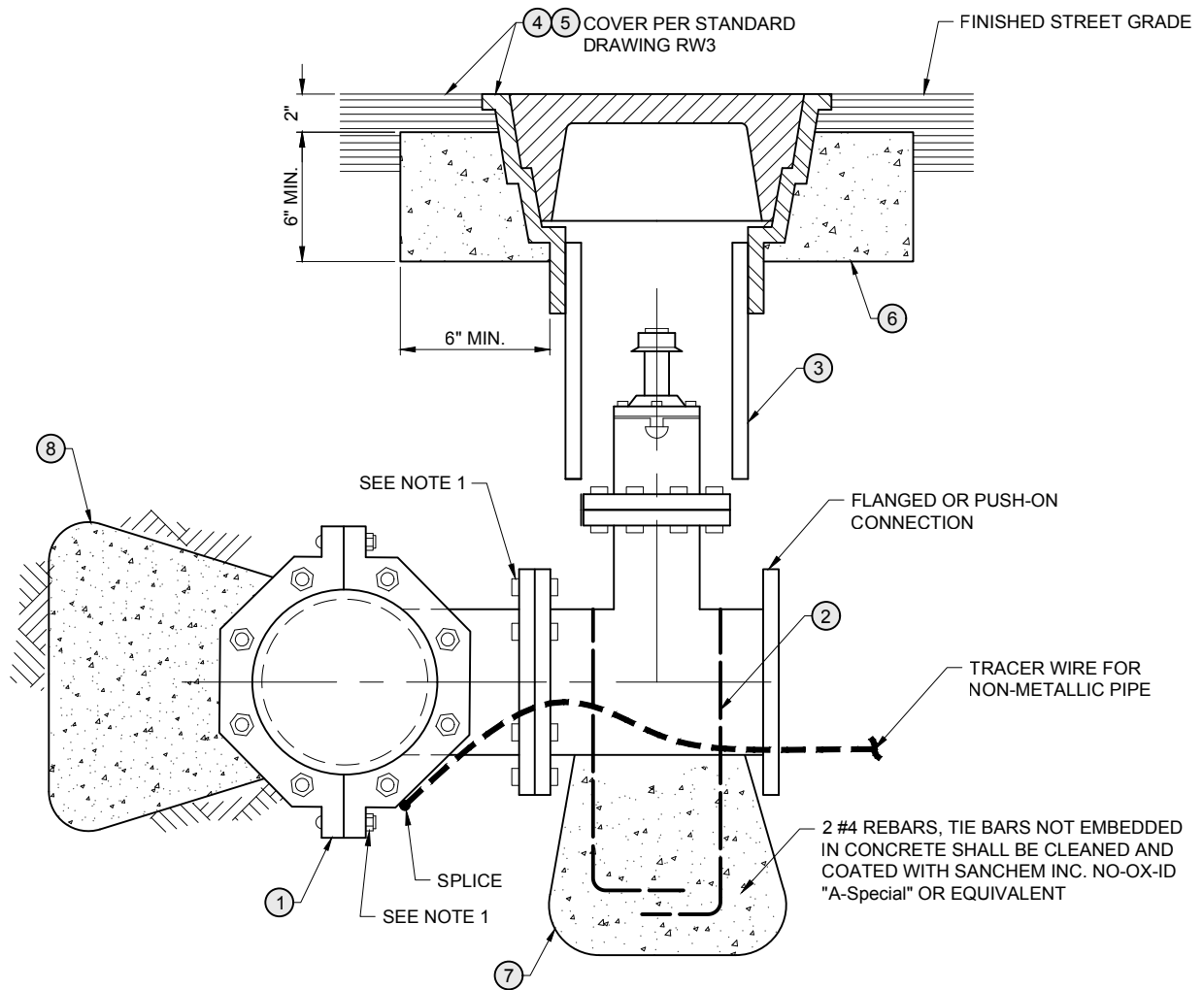
BUTTERFLY VALVE OPERATOR POSITIONS

Santa Margarita Water District

REVISION		DECEMBER 2021	
Date	Aprvd	APPROVED:	
11/23	PAB	<i>Patricia Butler</i> 6/24	
		PATRICIA A. BUTLER RCE C57880 DATE CHIEF ENGINEER, Engineering Department	

**RECYCLED VALVE,
VALVE BOX & COVER**

**SMWD
STD DWG NO.
RW3**
1 of 1



CONSTRUCTION ITEMS / MATERIALS LIST			
ITEM	SIZE AND DESCRIPTION	MANUFACTURER	MFR. CAT. NO. OR SPEC.
(1) (2)	TAPPING SLEEVE AND VALVE	MUELLER, CLOW OR APPROVED EQUAL	SEE SPECIFICATIONS FOR VALVES
(3)	5" PVC PIPE	----	----
(4) (5)	VALVE BOX AND COVER	----	SEE STD DWG RW3
(6)	CONCRETE RING, CLASS 560-C-3250	----	PER OCPW STD PLAN 1509
(7)	ANCHOR BLOCK	----	PER STD DWG W12, CONDITION 1
(8)	THRUST BLOCK	----	PER STD DWG W12, CONDITION 1

NOTES

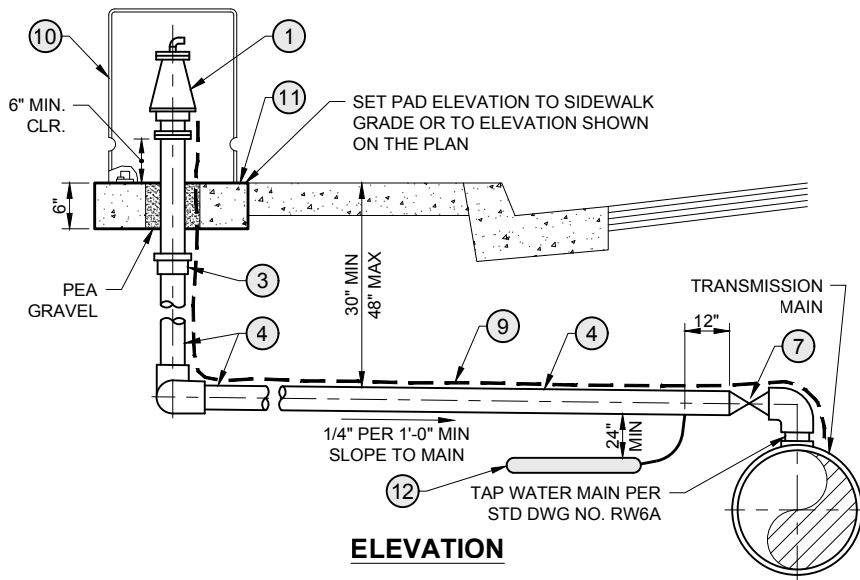
- ALL BURIED BOLTS SHALL BE COATED WITH CARBOLINE 890V OR APPROVED EQUAL.
- TAP ON EXISTING MAIN SHALL BE ONE SIZE LESS AND EDGE OF TAPPING SLEEVE SHALL BE MIN. 18" FROM A COLLAR OR SERVICE.

Santa Margarita Water District

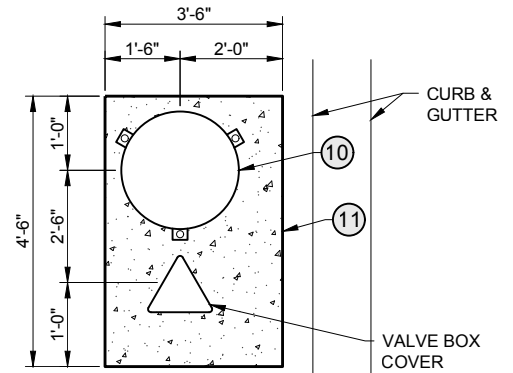
REVISION		DECEMBER 2021	
Date	Aprvd	APPROVED:	
11/23	PAB	<i>Patricia Butler</i>	
			6/24
PATRICIA A. BUTLER RCE C57880 DATE CHIEF ENGINEER, Engineering Department			

TAP OF RECYCLED ACP, PVC OR DIP MAINS

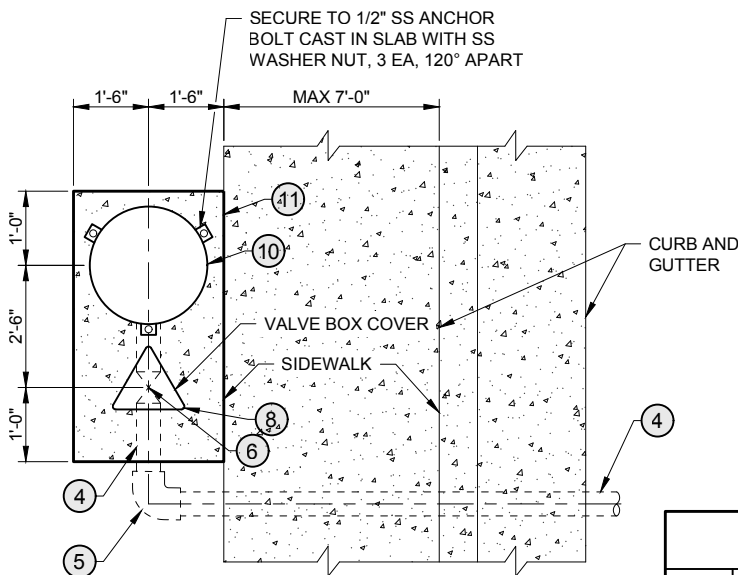
SMWD
STD DWG NO.
RW5
1 of 1



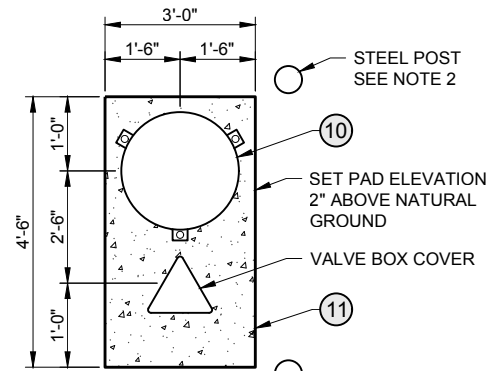
ELEVATION



PLAN
SIDEWALK WIDER THAN 7 FEET OR
SIDEWALK NOT ADJACENT TO CURB



PLAN
WITH SIDEWALK



PLAN
UNIMPROVED AREA

NOTES

- ALL BURIED BOLTS SHALL BE COATED WITH SANCHEM INC. NO-OX-ID "A-Special" OR APPROVED EQUAL.
- IN AREAS WHERE NO CURB OR BERM EXISTS OR WHERE THERE IS ONLY ROLLED CURB AND GUTTER, INSTALL ONE 3" GALVANIZED STEEL POST (PAINTED IN ACCORDANCE WITH STANDARD DRAWING W7) AT EACH CORNER OF CONCRETE PAD ON TRAFFIC SIDE. IMBED POSTS IN 24" OF CONCRETE 2" BELOW GRADE AND EXTEND 3' ABOVE GRADE.
- FOR AIR/VAC ASSEMBLIES IN SLOPES, SEE STANDARD DRAWING W28.
- FOR 1" AND 2" AIR/VAC USE PART NO. D021 FOR PRESSURES UP TO 150 PSI. FOR 1" AND 2" USE PART NO. D020 FOR PRESSURES UP TO 250 PSI.
- FOR 1" AIR/VAC USE ARMORCAST PART NO. P6002003. FOR 2" AIR/VAC USE ARMORCAST PART NO. P6002002 POLYMER CONCRETE, COLOR: GRANITE.

CONSTRUCTION ITEMS / MATERIALS LIST

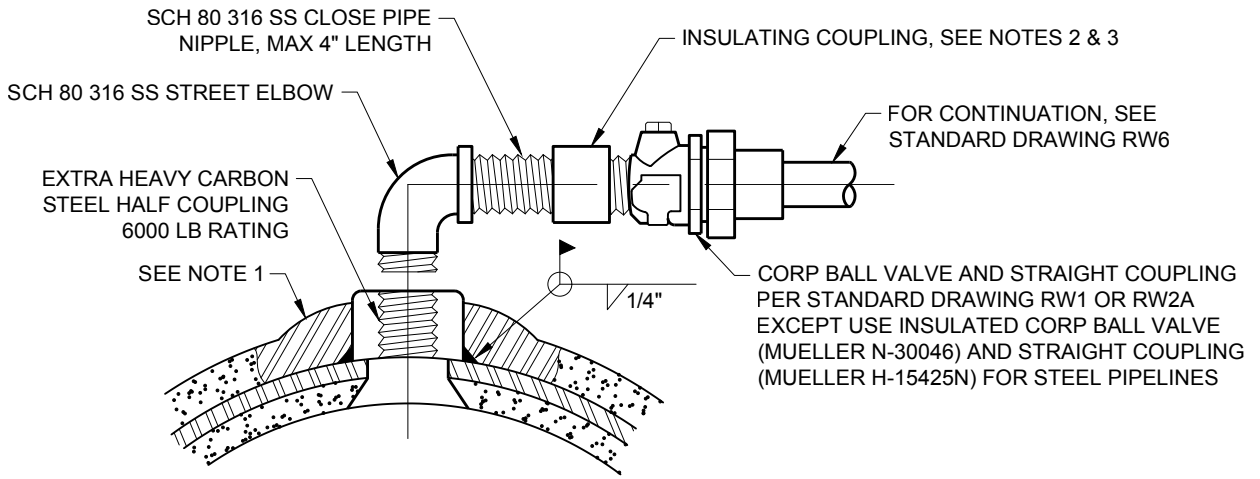
ITEM	SIZE AND DESCRIPTION	MANUFACTURER	MFR. CAT. NO. OR SPEC.
1	1" (2") AIR RELEASE AND VACUUM VALVE	A.R.I. USA Inc.	SEE NOTE 4
2	1" (2") BRASS NIPPLE	-----	-----
3	1" (2") SILVER SOLDER COPPER FITTING	-----	-----
4	1" (2") COPPER TUBING WITH POLYETHYLENE SLEEVE PER STD DWGS W1-W3	-----	TYPE "K" SOFT
5	1" (2") 90° LONG RADIUS SILVER SOLDER SWEAT ELBOW	-----	-----
6	1" (2") BRONZE BALL VALVE	JONES, MUELLER	E1900, B-20283N
7	1" (2") WATER SERVICE PVC OR DIP MAINS, PER STD DWGS W1-W3, ITEMS 1 & 2	-----	-----
8	VALVE BOX AND COVER	-----	SEE RW3
9	TRACER WIRE PER SMWD STANDARDS	-----	-----
10	AIR/VAC ENCLOSURE	ARMORCAST	SEE NOTE 5
11	CONCRETE PAD, CLASS 560-C-3250	-----	-----
12	15 LB ZINC ANODE PER STD DWGS RW1 & RW2A	-----	-----

Santa Margarita Water District

REVISION		DECEMBER 2021	
Date	Aprvd	APPROVED:	
11/23	PAB	<i>Patricia Butler</i> 6/24	
		PATRICIA A. BUTLER RCE C57880 DATE CHIEF ENGINEER, Engineering Department	

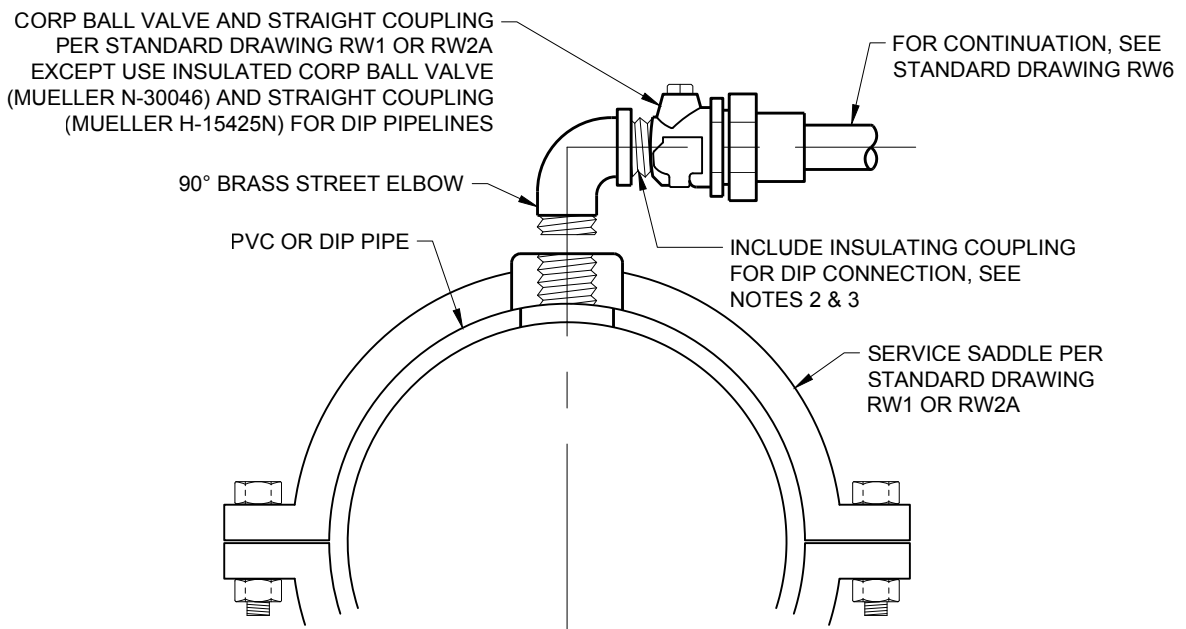
**1" & 2" RECYCLED
COMBINATION AIR RELEASE AND
VACUUM VALVE ASSEMBLY**

SMWD
STD DWG NO.
RW6
1 of 1



AIR/VACUUM CONNECTION FOR STEEL MAINS

N.T.S.



AIR/VACUUM CONNECTION FOR PVC OR DIP

N.T.S.

NOTES

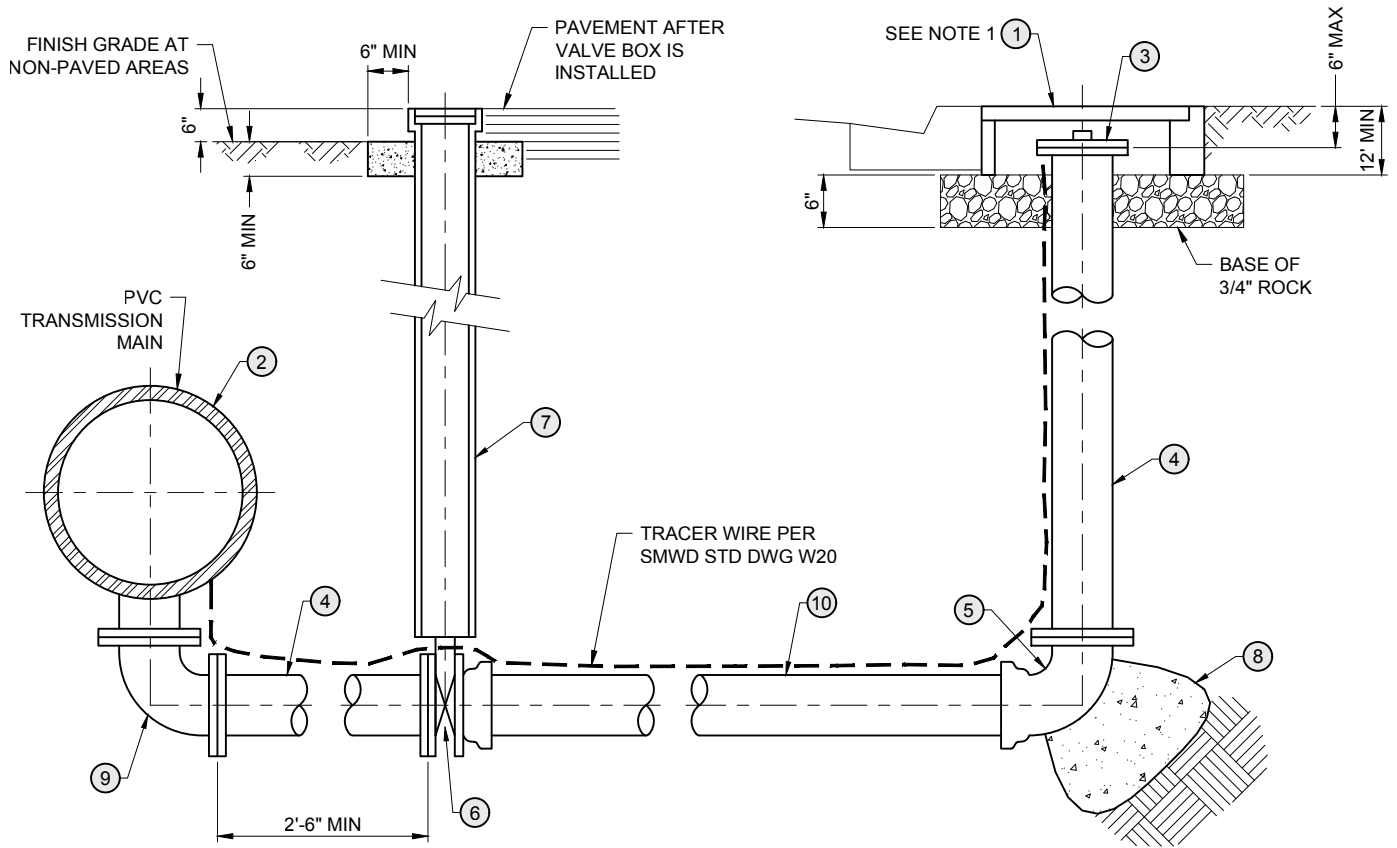
1. ALL LINING AND COATING DAMAGED OR REMOVED FOR INSTALLATION OF THE SERVICE TAP SHALL BE REPAIRED OR REPLACED TO THE SATISFACTION OF THE SMWD INSPECTOR.
2. COUPLING SHALL BE AN ISOLATION UNION, O-RING, 3000# BY GEORGE FISCHER CENTRAL PLASTICS | FARWEST CORROSION CONTROL COMPANY.
3. COAT EXPOSED PORTIONS OF HALF COUPLING, GALVANIZED STEEL PIPE, DIP AND INSULATING COUPLING WITH SANCHEM INC. NO-OX-ID "A-Special" OR APPROVED EQUAL.
4. THIS INSTALLATION SHALL BE USED FOR AV CONNECTIONS UP TO 2 INCHES ONLY.
5. BACKFILL ENTIRE AIR/VACUUM LATERAL WITH 2 SACK CEMENT SLURRY.

Santa Margarita Water District

REVISION		DECEMBER 2021	
Date	Aprvd	APPROVED:	
11/23	PAB	<i>Patricia Butler</i> 6/24	
		PATRICIA A. BUTLER RCE C57880 DATE	
		CHIEF ENGINEER, Engineering Department	

**RECYCLED WATER MAIN TAPS
FOR AIR/VACUUM ASSEMBLY**

SMWD
STD DWG NO.
RW6A
1 of 1



CONSTRUCTION ITEMS / MATERIALS LIST

ITEM	SIZE AND DESCRIPTION
①	POLYMER METER BOX WITH PURPLE LID PER STANDARD DRAWING RW2A WITHOUT QUICK READ PORT
②	FLANGED D.I.P. TEE (MAINLINE DIAMETER x 4") WITH TWO FLG x P.O. ADAPTERS TO MATCH MAINLINE
③	4" BLIND FLANGE WITH 2" I.P. TAP AND PVC THREADED PLUG
④	4" FLG. D.I.P. SPOOL (LENGTH AS REQUIRED)
⑤	4" 90° D.I.P. ELBOW (FLG x P.O.)
⑥	4" RW GATE VALVE (FLG x P.O.) VALVE TO MATCH MAINLINE PRESSURE
⑦	VALVE BOX AND COVER ASSEMBLY (PER STANDARD DRAWING RW3)
⑧	CONCRETE THRUST BLOCK (PER STANDARD DRAWING W12, CONDITION II)
⑨	4" 90° D.I.P. ELBOW (FLG x FLG)
⑩	4" AWWA C-900 PURPLE PVC PIPE

NOTES

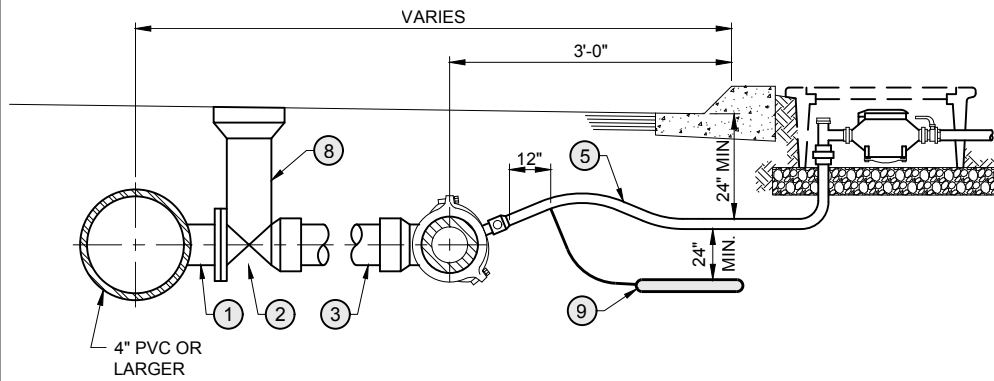
1. INSTALL METER BOX DIRECTLY BEHIND CURB OR AS DIRECTED ON THE PLANS.
2. WRAP SERVICE LINE FROM MAINLINE TO METER BOX WITH PURPLE IDENTIFICATION TAPE.
3. ATTACH ANODE PER PROJECT SPECIFICATIONS AND BOND ACROSS DUCTILE IRON JOINTS PER STANDARD DRAWING W25.

Santa Margarita Water District

REVISION	DECEMBER 2021
Date	Aprvd
11/23	PAB
APPROVED:	
<i>Patricia Butler</i> 6/24	
PATRICIA A. BUTLER RCE C57880 DATE	
CHIEF ENGINEER, Engineering Department	

4" BLOW OFF PVC MAIN CONNECTION

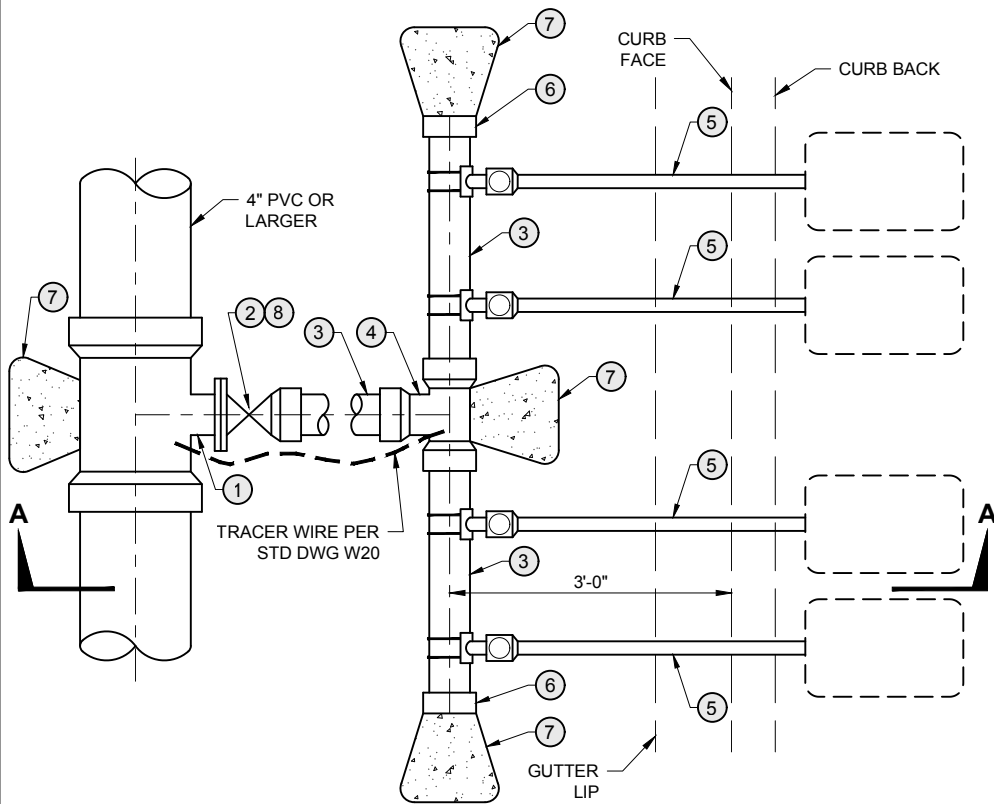
SMWD
STD DWG NO.
RW8
1 of 1



NOTES:

1. DOUBLE TRAP SERVICE SADDLE REQUIRED FOR ALL MAINS, EXCEPT PVC UNDER 12" DIAMETER.
2. INSTALL CORPORATION STOP WITH KEY SIDEWAYS, IN OPEN POSITION.
3. THE CORPORATION STOP TAP WILL BE MADE AS SPECIFIED BY THE PIPE MANUFACTURER. ALL DRY TAPS WILL BE MADE USING MACHINE WITH GUIDE OR PILOT TAP.
4. THE WATER SERVICE SHALL EXTEND PERPENDICULAR TO THE CENTERLINE OF THE STREET FROM THE WATER MAIN TO THE METER STOP EXCEPT IN CUL-DE-SAC ENDS, WHERE NON-PERPENDICULAR INSTALLATION IS ALLOWED.
5. NO TAP TO MAIN SHALL BE WITHIN 18 INCHES OF A COUPLING. TAP FOR 1" SERVICES SHALL BE A MIN. OF 18" APART. TAPS FOR 1 1/2" AND 2" SHALL BE A MIN. OF 24" APART.
6. METER BOXES SHALL BE INSTALLED DIRECTLY BEHIND THE CURB WHETHER SIDEWALK IS DIRECTLY BEHIND THE CURB OR NOT. IF THERE IS NO SIDEWALK, THE METERS MUST BE SET WITHIN A 6" THICK CONCRETE PAD EXTENDING 1' IN ALL DIRECTIONS FROM OUTSIDE EDGE OF OUTERMOST METER BOXES.
7. NO SPLICES WILL BE PERMITTED BETWEEN CORPORATION STOP AND ANGLE METER STOP EXCEPT WHEN SERVICE RUN EXCEEDS 20 FEET, IN WHICH CASE A SILVER SOLDER COPPER COUPLING SHALL BE USED.
8. ALL LIDS AND COVERS SHALL BE RATED FOR H20 TRAFFIC LOADING.
9. FOR SERVICE TAP OF STEEL MAINS, SEE STANDARD DRAWING W6.
10. A MAXIMUM OF FOUR SERVICES MAY BE CONNECTED TO MANIFOLD.
11. INSTALL TRACER WIRE PER SPECIFICATION.
12. FOR METERS IN SLOPES, SEE STANDARD DRAWING W28.
13. MANIFOLD MAY BE INSTALLED BEHIND THE SIDEWALK AT THE DISCRETION OF THE DISTRICT'S ENGINEER.

SECTION A-A



PLAN

CONSTRUCTION ITEMS / MATERIALS LIST		
ITEM	SIZE AND DESCRIPTION	MFR. CAT. NO. OR SPEC.
①	FLG x PUSH-ON TEE	----
②	4" RW GATE VALVE, FLG x PUSH-ON	----
③	4" PURPLE PVC WITH TRACER WIRE	AWWA C-900
④	PUSH-ON TEE	----
⑤	SERVICE INSTALLATION, SEE STANDARD DRAWINGS RW1, RW2, RW2A	PER STD DWGS RW1, RW2, RW2A
⑥	DEAD END SERVICE CONNECTION	PER STD DWG W5
⑦	THRUST BLOCK	PER STD DWG W12
⑧	VALVE BOX ASSEMBLY	PER STD DWG RW3 ITEMS 2 THRU 6
⑧	15 LB ZINC ANODE (ONE PER SERVICE)	

Santa Margarita Water District

REVISION		DECEMBER 2021	
Date	Aprvd	APPROVED:	
11/23	PAB	<i>Patricia Butler</i> 6/24	
		PATRICIA A. BUTLER RCE C57880 DATE	
		CHIEF ENGINEER, Engineering Department	

METER MANIFOLD INSTALLATION

SMWD
STD DWG NO.
RW9
1 of 1